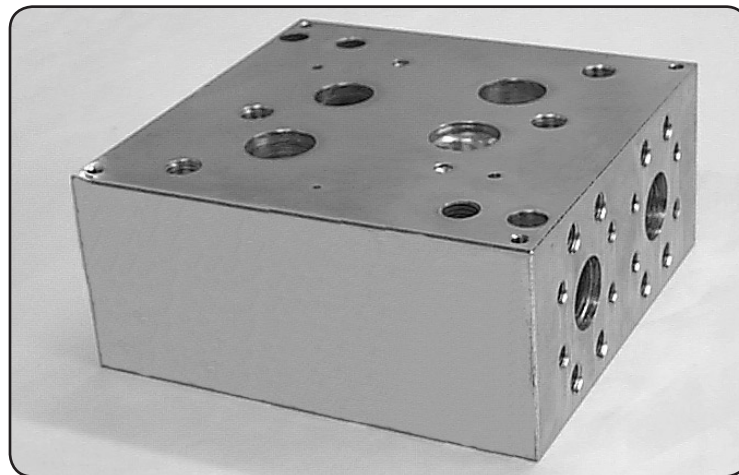
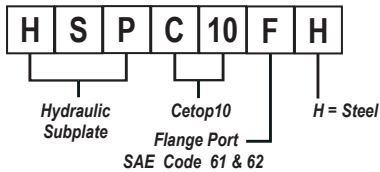




HSPC10FH Subplate - Cetop10 - Flange Ports - Steel



Specifications

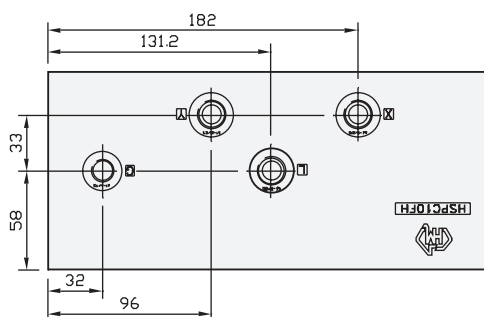
Material :	Steel - AS3678:250
Max. Working Pressure :	Steel - 350 Bar
Surface Treatment :	Steel - Zinc Gold Passivation
Port Sizes :	P & T - 1-1/2" SAE 61 & 62 A & B - 1-1/2" SAE 61 & 62 X , Y & L - 3/8" BSPP G - 1/4" BSPP

Included Components

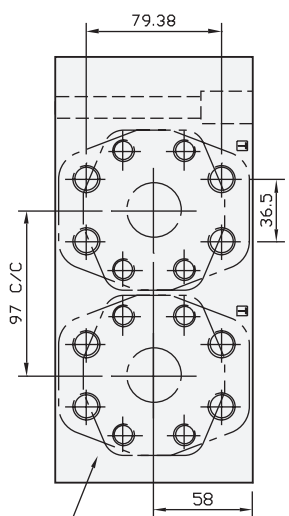
Socket Head Cap Screws :	(Inc. 4 x M12 Nuts) 4 each M12 x 110
Flat Washers :	4 each M12

Technical Details

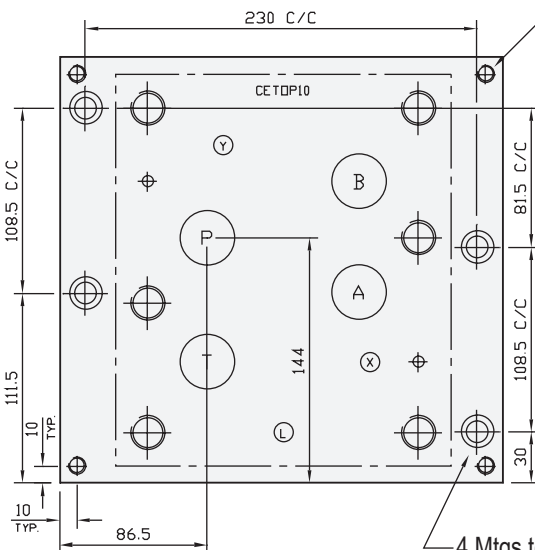
CETOP 10



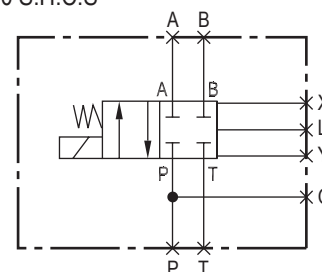
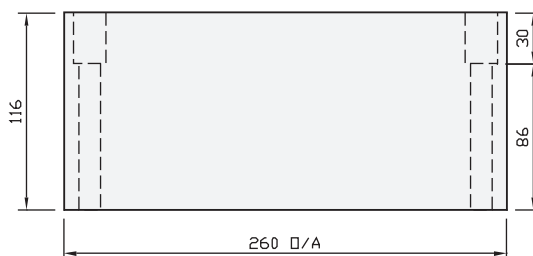
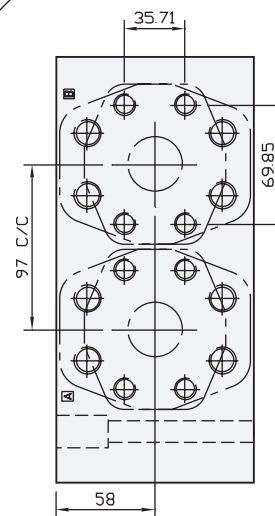
MTG THREAD INFORMATION
 SAE CODE 61 - 1/2" UNC x 26 DP
 SAE CODE 62 - 5/8" UNC x 28 DP



BOTH ENDS SUIT
 1-1/2" CODE 61 & CODE 62
 SAE FLANGES



4 off Lift Points M10 x 15 Dp



Manifold Circuit



Part Number	Nominal Mass Kg
HSPC10FH	53.0