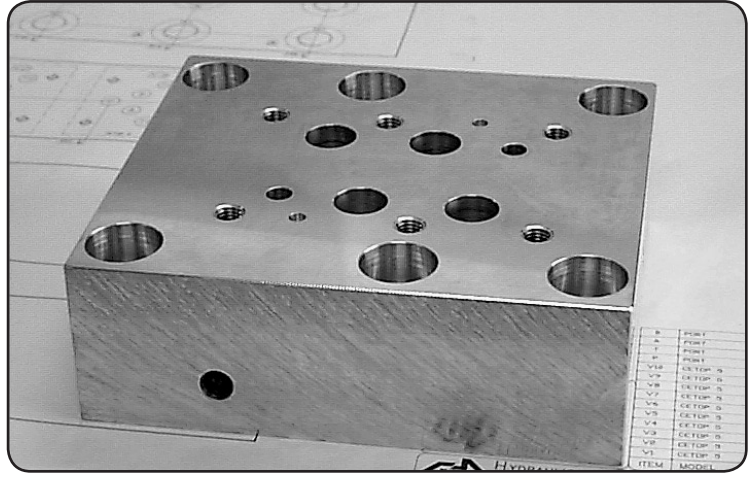




# HASC10C8XY\* Adaptor Sandwich - Cetop10 to Cetop8 - X & Y-Ports

**H A S C 10 C 8 X Y \***



### Specifications

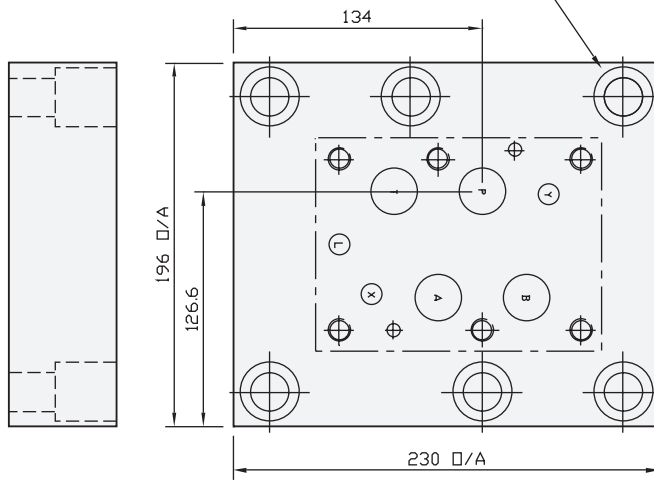
<b>Material :</b>	Alloy 6061-T6	Steel - S1214
<b>Max. Working Pressure :</b>	Alloy - 210 Bar	Steel - 350 Bar
<b>Surface Treatment :</b>	Alloy - Nil	Steel - Zinc Gold Passivation

### Included Components

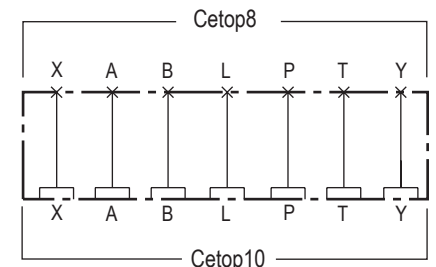
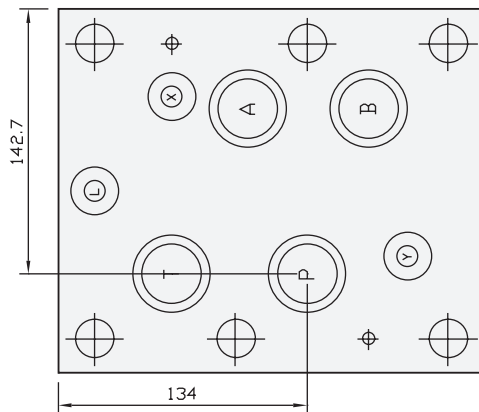
<b>Socket Head Cap Screws :</b>	6 each M20 x 65
<b>O-Rings :</b>	4 each N9-220 , 3 each N9-210

### Technical Details

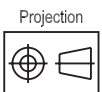
6 Mtgs to Suit M20 x 65 S.H.C.S.



O-Rings to suit  
32mm dia. as per  
ISO Standard 4401



Manifold Circuit



Part Number	Nominal Mass Kg
HASC10C8XYH	18.0
HASC10C8XYM	10.1