



# HXPC8\*\*\*

# Crossover Plate - Cetop8



H = Steel  
M = Alloy

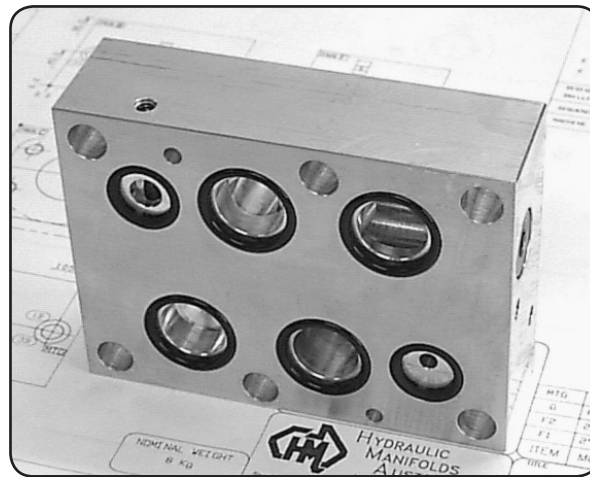
Function Descriptions - Refer to Circuits Shown

### Specifications

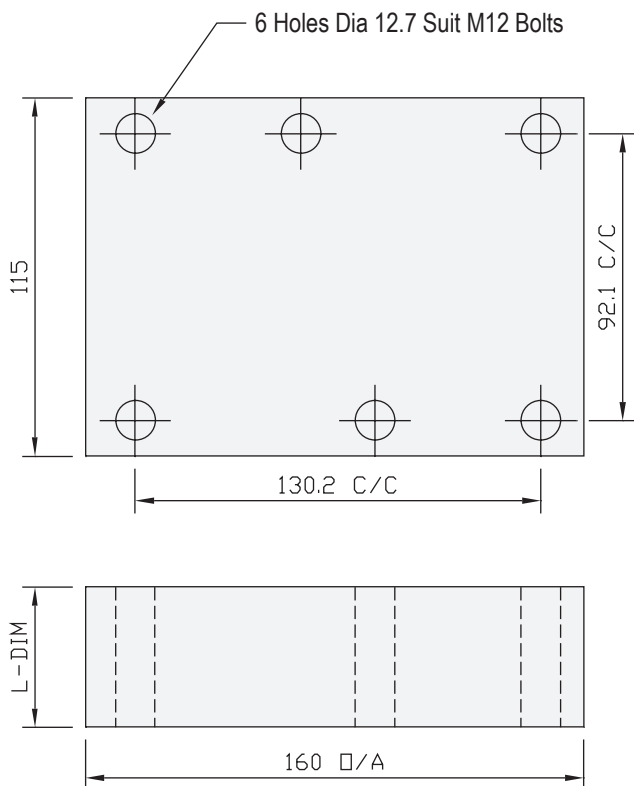
Material :	Alloy - 6061-T6	Steel - S1214
Max. Working Pressure :	Alloy - 210 Bar	Steel - 350 Bar
Surface Treatment :	Alloy - Nil	Steel - Zinc Gold Passivation

### Included Components

Socket Head Cap Screws :	6 each M12 x 60
	6 each M12 X 40 ( PB,PA & TA Models Only )
O-Rings :	2 each N9-121, 1 each N9-149, 2 each N9-114 ( TB & BA )
	2 each N9-149, 2 each N9-114 ( PT, AB & TB )
	4 each N9-121, 2 each N9-114



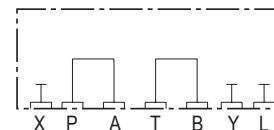
### Technical Details



Projection



**HXPC8PBTA\***  
P to B-Port & T to A-Port



**HXPC8PATB\***  
P to A-Port & T to B-Port



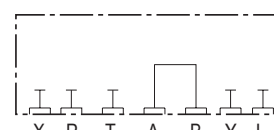
**HXPC8PA\***  
P to A-Port, T & B Blocked



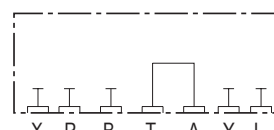
**HXPC8TB\***  
T to B-Port, P & A Blocked



**HXPC8PB\***  
P to B-Port, T & A Blocked



**HXPC8AB\***  
A to B-Port, P & T Blocked



**HXPC8TA\***  
T to A-Port, P & B Blocked



**HXPC8PT\***  
P to T-Port, A & B Blocked

### Steel

Part Number	L Dim	Nominal Mass Kg
HXPC8PBTAH	45	4.5
HXPC8PATBH	45	4.5
HXPC8PTH	45	4.5
HXPC8ABH	45	4.5
HXPC8PAH	24	3.2
HXPC8PBH	24	3.2
HXPC8TAH	24	3.2
HXPC8TBH	45	4.5

ALL CROSSOVER PLATES ARE  
MADE TO ORDER

Part Number	L Dim	Nominal Mass Kg
HXPC8PBTAM	45	1.2
HXPC8PATBM	45	1.2
HXPC8PTM	45	1.2
HXPC8ABM	45	1.2
HXPC8PAM	24	1.0
HXPC8PBM	24	1.0
HXPC8TAM	24	1.0
HXPC8TBM	45	1.2