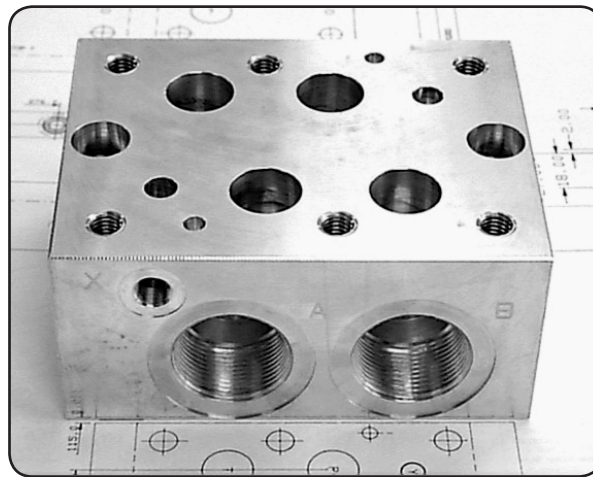
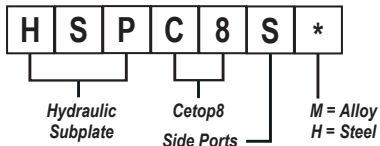




HSPC8S*

Subplate - Cetop8 - Side Ports



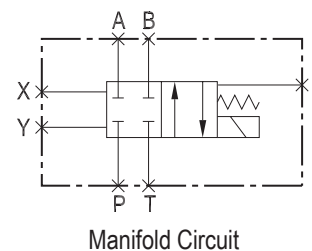
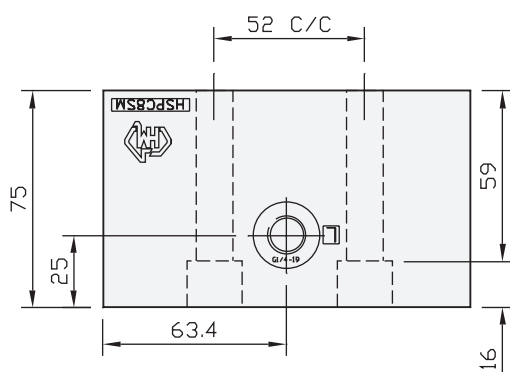
Specifications

Material :	M = Alloy - 6061-T6	H = Steel - S1214
Max. Working Pressure :	Alloy - 210 Bar	Steel - 350 Bar
Surface Treatment :	Alloy - Nil	Steel - Zinc Gold Passivation
Port Sizes :	P & T - 1-1/4" BSPP	A & B - 1-1/4" BSPP
	X, Y & L - 1/4" BSPP	G - 1/4" BSPP

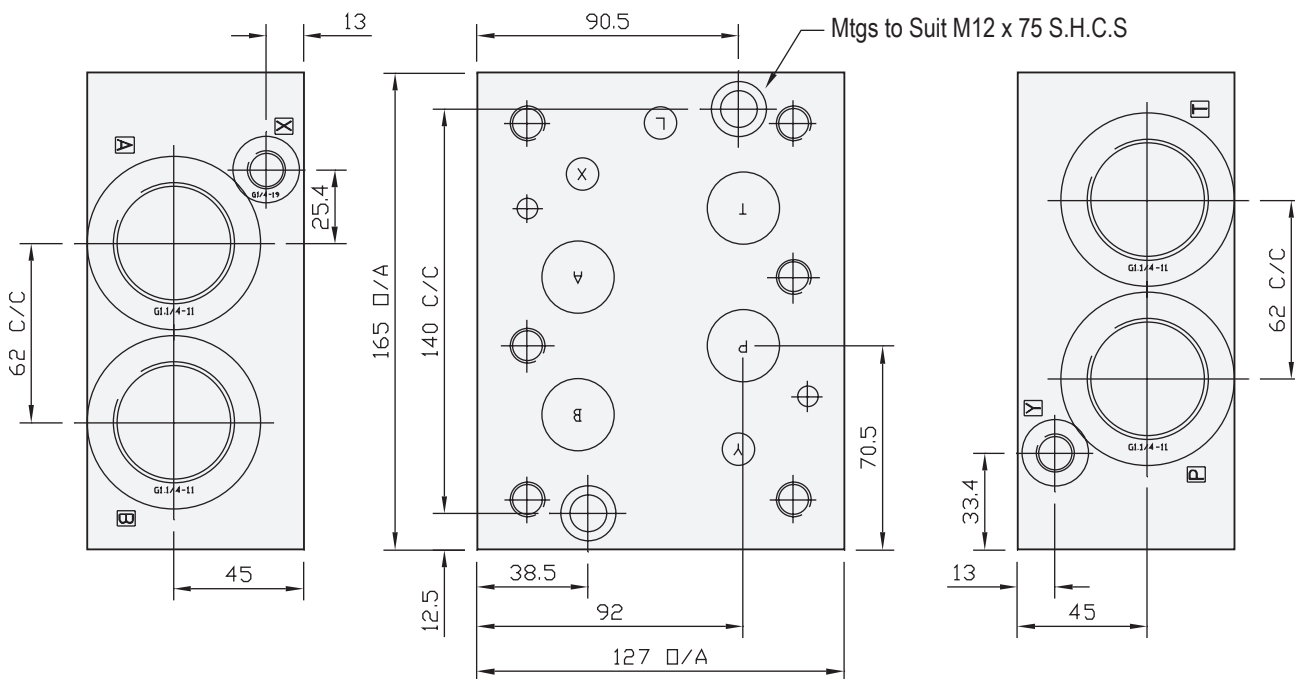
Included Components

Socket Head Cap Screws :	(Inc. 2 x M12 Nuts) 2 each M12 x 75
Flat Washers :	2 each M12

Technical Details



CETOP 8



Projection



Part Number	Nominal Mass Kg
HSPC8SH	1.7
HSPC8SM	4.0