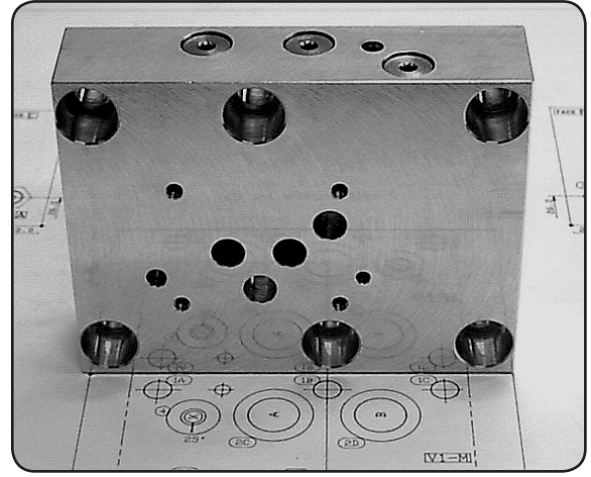
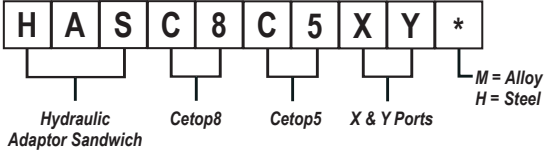




HASC8C5XY* Adaptor Sandwich - Cetop8 to Cetop5 - X & Y-Ports



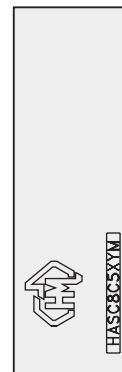
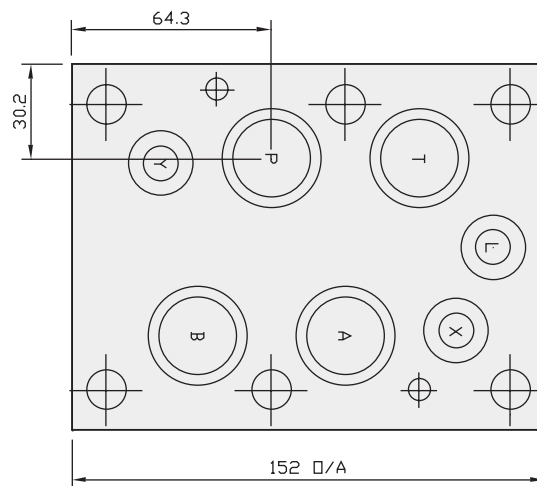
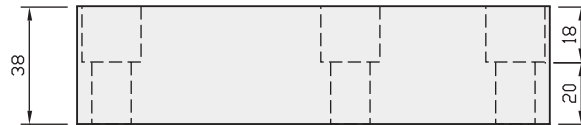
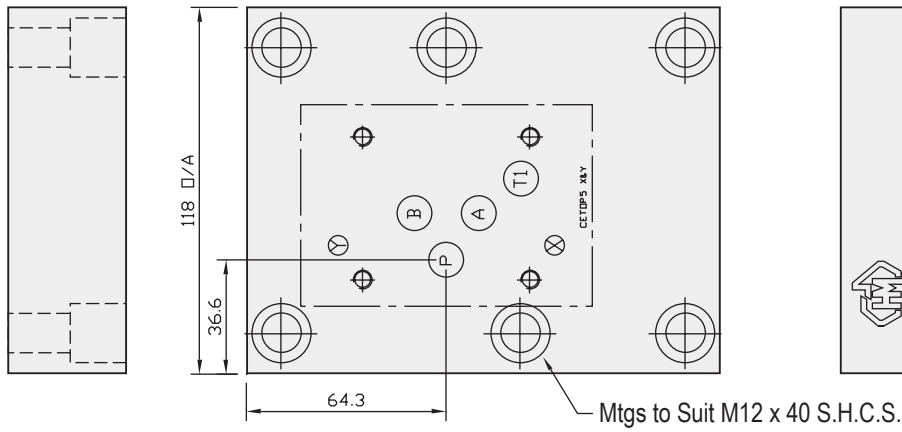
Specifications

Material :	Alloy 6061-T6	Steel - S1214
Max. Working Pressure :	Alloy - 210 Bar	Steel - 350 Bar
Surface Treatment :	Alloy - Nil	Steel - Zinc Gold Passivation

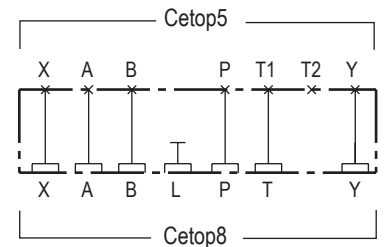
Included Components

Socket Head Cap Screws :	4 each M12 x 40
O-Rings :	4 each N9-121, 3 each N9-114

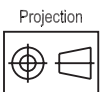
Technical Details



CETOP8



Manifold Circuit



Part Number	Nominal Mass Kg
HASC8C5XYH	7.0
HASC8C5XYM	2.0