



HXPC7***

Crossover Plate - Cetop7



H X P C 7
Hydraulic Crossover Plate Cetop7

H = Steel
M = Alloy

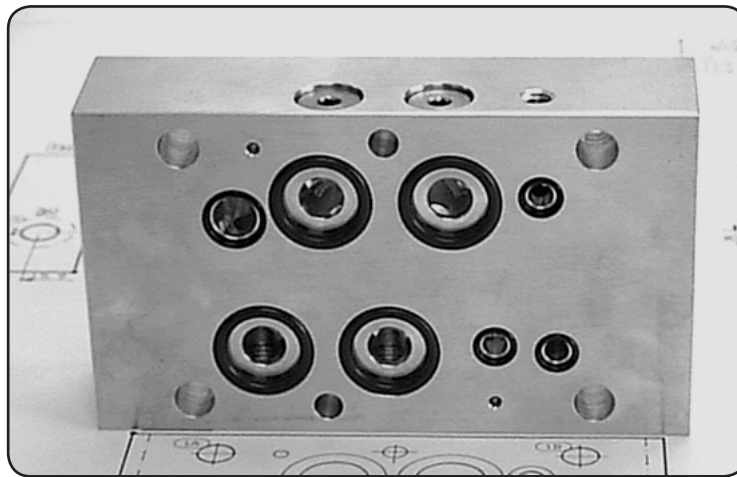
Function Descriptions - Refer to Circuits Shown

Specifications

Material :	Alloy - 6061-T6	Steel - S1214
Max. Working Pressure :	Alloy - 210 Bar	Steel - 350 Bar
Surface Treatment :	Alloy - Nil	Steel - Zinc Gold Passivation

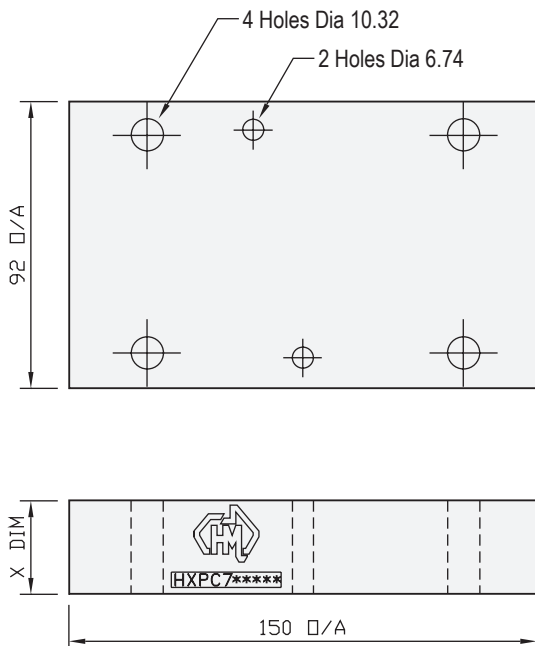
Included Components

Socket Head Cap Screws :	4 each M10 x 50 , 2 each M6 x 45 (HXPC7PATB Only) 4 each M10 x 75 , 2 each M6 x 70
O-Rings :	4 each N9-118 , 3 each N9-011



Technical Details

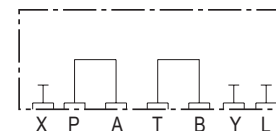
CETOP 7



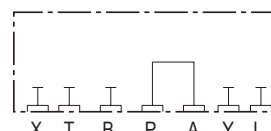
Projection



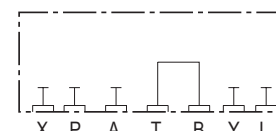
HXPC7PBTA*
P to B-Port & T to A-Port



HXPC7PATB*
P to A-Port & T to B-Port



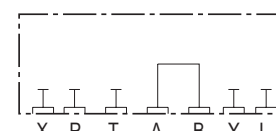
HXPC7PA*
P to A-Port , T & B Blocked



HXPC7TB*
T to B-Port , P & A Blocked



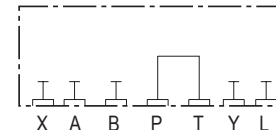
HXPC7PB*
P to B-Port , T & A Blocked



HXPC7AB*
A to B-Port , P & T Blocked



HXPC7TA*
T to A-Port , P & B Blocked



HXPC7PT*
P to T-Port , A & B Blocked

Steel

Part Number	X Dim	Nominal Mass Kg
HXPC7PBTAH	56	3.0
HXPC7PATBH	56	3.0
HXPC7PTH	30	3.0
HXPC7ABH	30	3.0
HXPC7PAH	30	3.0
HXPC7PBH	30	3.0
HXPC7TAH	30	3.0
HXPC7TBH	30	3.0

SOME CROSSOVER PLATES ARE MADE TO ORDER

Part Number	X Dim	Nominal Mass Kg
HXPC7PBTAM	56	1.5
HXPC7PATBM	56	1.5
HXPC7PTM	30	1.5
HXPC7ABM	30	1.5
HXPC7PAM	30	1.5
HXPC7PBM	30	1.5
HXPC7TAM	30	1.5
HXPC7TBM	30	1.5