



HVSC7LS*H* Load Sense Sandwich - Cetop7 - Steel

H V S C 7 L S * H L

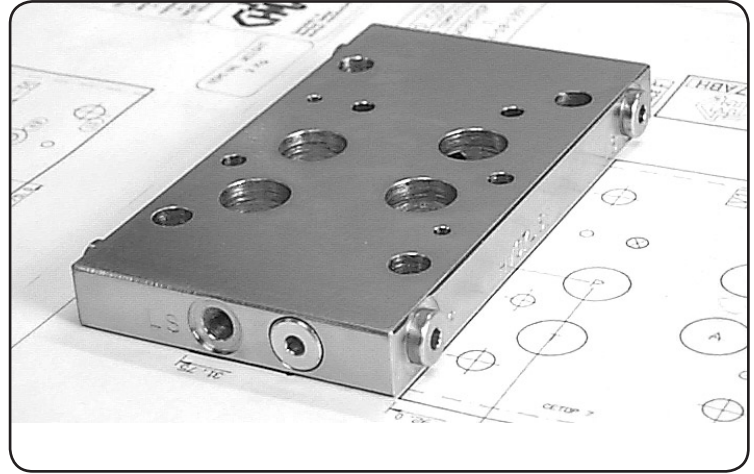
Hydraulic Valve Sandwich
 Cetop7
 Load Sense
 L = L-Port Load Sense Interface Connection Omit if Not Required
 H = Steel

Specifications

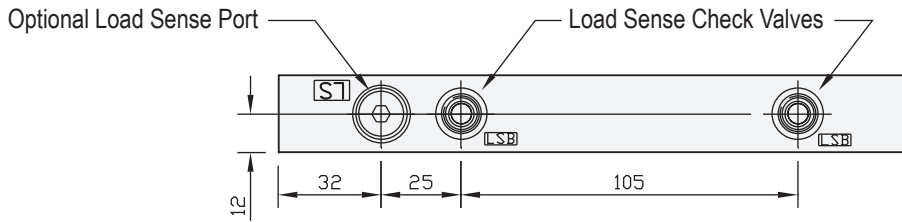
Material : Alloy 6061-T6 Steel - AS3678:250
Max. Working Pressure : Alloy - 210 Bar Steel - 350 Bar
Surface Treatment : Alloy - Nil Steel - Zinc Gold Passivation
Port Sizes : LS- 1/8" BSPP

Included Components

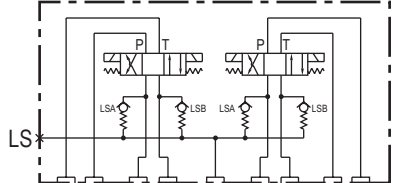
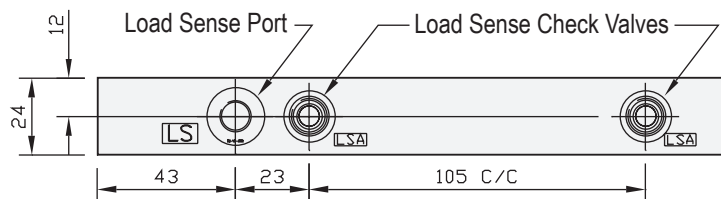
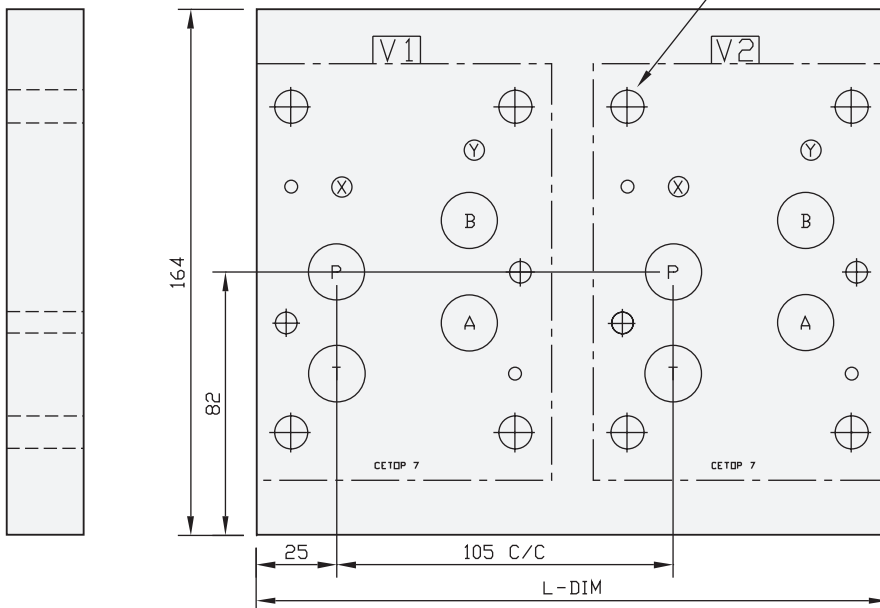
O-Rings : 4 each station N9-118 , 3 each station N9-011
CP-104 Load Sense Check Valves : 2 each station
Plugs : 1 each station 1/8" BSPP



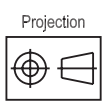
Technical Details



Each Station 4 Holes Dia 10.32
2 Holes Dia 6.74



L-Port Optional (Provides Internal Load Sense Communication) Manifold Circuit



Part Number	L Dim	Nominal Mass Kg
HVSC7LS1H	92	2.4
HVSC7LS2H	197	5.0
HVSC7LS3H	302	8.0
HVSC7LS4H	407	11.0

ALL LOAD SENSE SANDWICHES MADE TO ORDER



CP-104- Load Sense Check Valves Available Separately

CETOP 7