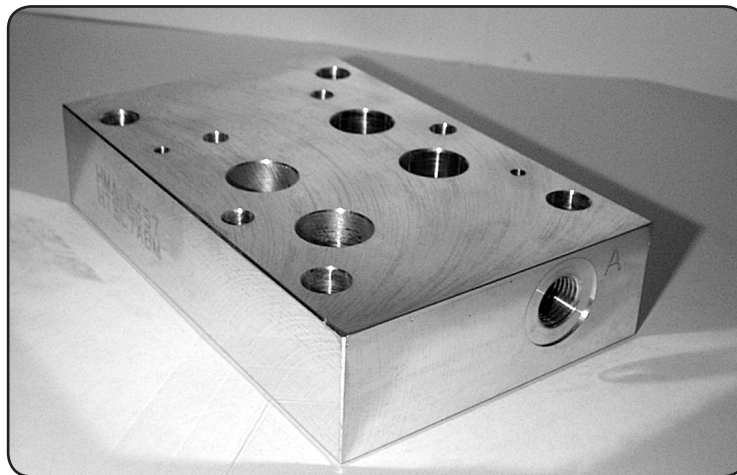
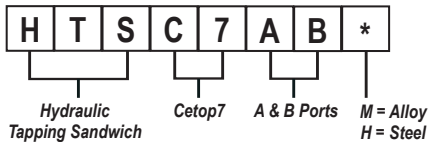




# HTSC7AB\* Tapping Sandwich - Cetop7 - A & B-Ports



### Specifications

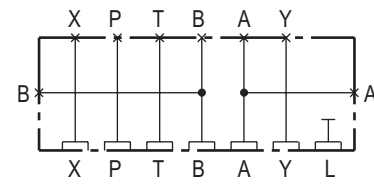
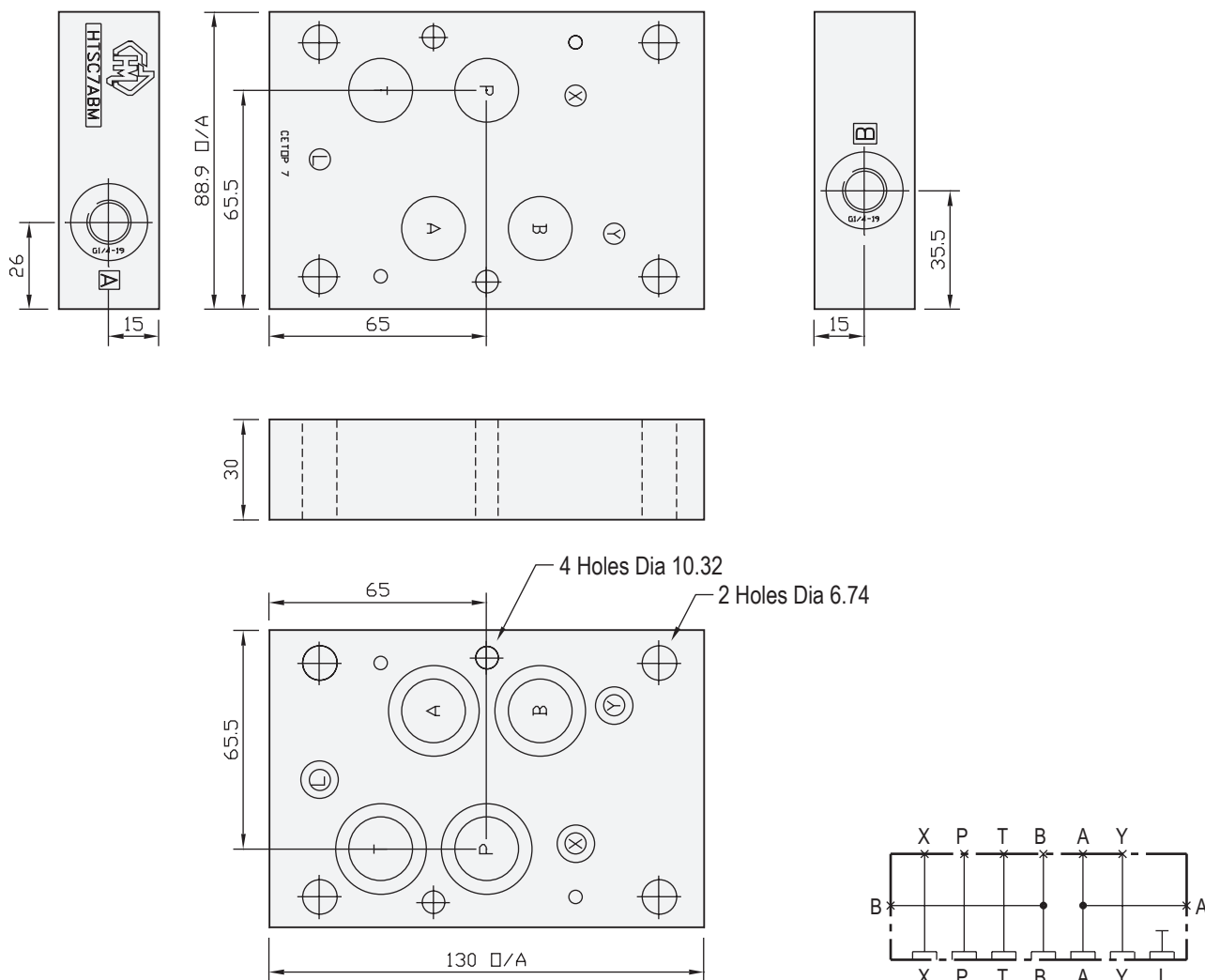
<b>Material :</b>	Alloy 6061-T6	Steel - S1214
<b>Max. Working Pressure :</b>	Alloy - 210 Bar	Steel - 350 Bar
<b>Surface Treatment :</b>	Alloy - Nil	Steel - Zinc Gold Passivation
<b>Port Sizes :</b>	A & B - 1/4" BSPP	

### Included Components

**O-Rings :** 4 each N9-118 , 3 each N9-011

### Technical Details

CETOP 7



Projection



Part Number	Nominal Mass Kg
HTSC7ABH	3.0
HTSC7ABM	0.9