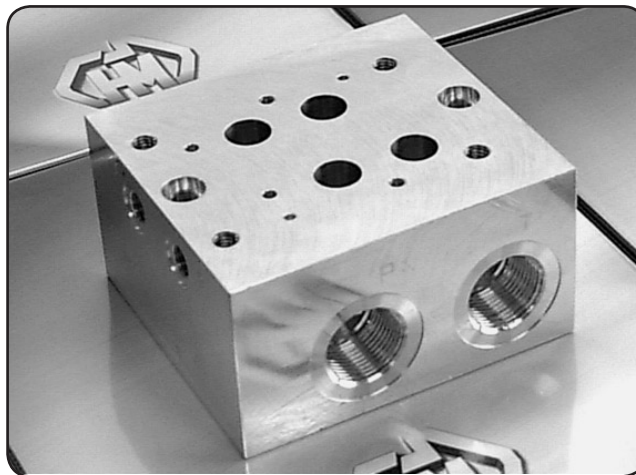
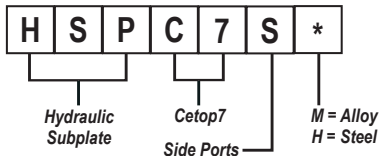




HSPC7S*

Subplate - Cetop7 - Side Ports



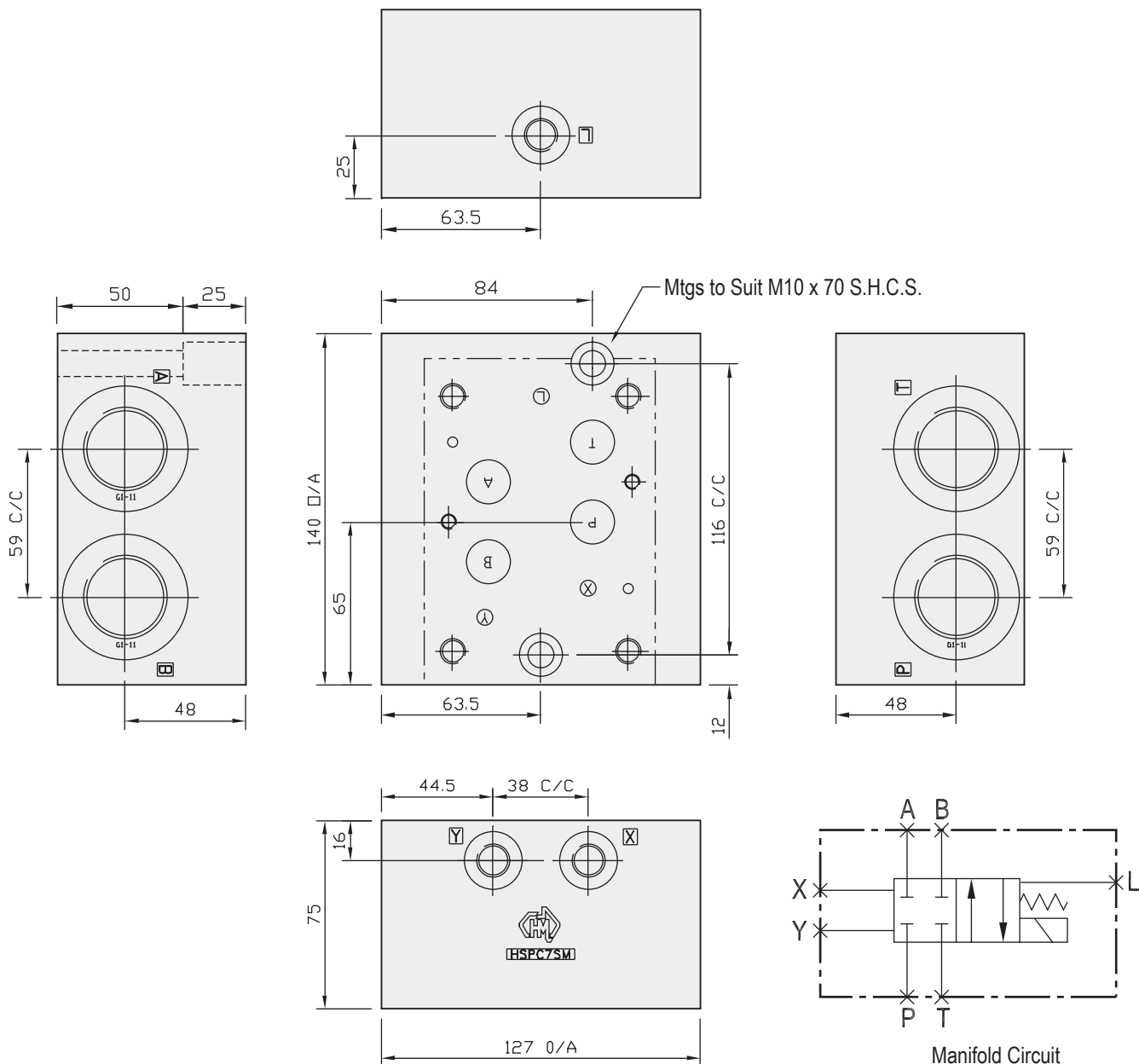
Specifications

Material :	Alloy 6061-T6	Steel - S1214
Max. Working Pressure :	Alloy - 210 Bar	Steel - 350 Bar
Surface Treatment :	Alloy - Nil	Steel - Zinc Gold Passivation
Port Sizes :	P & T - 1" BSPP	A & B - 1" BSPP X, Y & L - 1/4" BSPP

Included Components

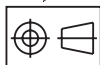
Socket Head Cap Screws :	(Inc. 2 x M10 Nuts) 2 each M10 x 70
Flat Washers :	2 each M10

Technical Details



CETOP 7

Projection



Part Number	Nominal Mass Kg
HSPC7SH	7.0
HSPC7SM	3.2