



# HSPC7FH\*

# Subplate - Cetop7 - Flange Ports - Steel

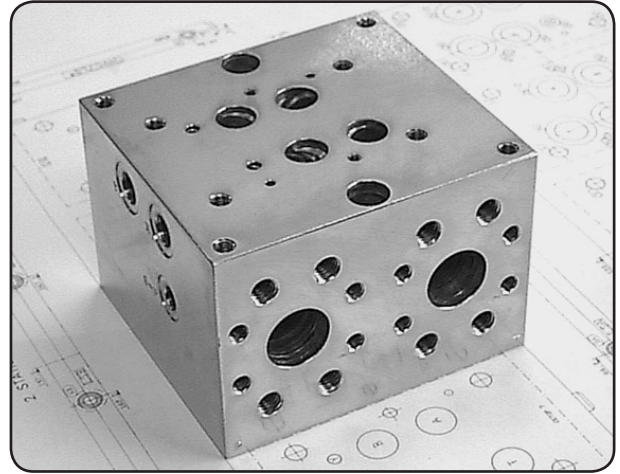
**H S P C 7 F H \***

Hydraulic Subplate

Cetop7 Flange Port  
SAE Code 61 & 62

H = Steel

S = Sun Relief Cavity T16-A  
Omit If Relief Not Required



### Specifications

**Material :** Steel - AS3678:250  
**Max. Working Pressure :** Steel - 350 Bar  
**Surface Treatment :** Steel - Zinc Gold Passivation  
**Port Sizes :** P & T - 1-1/4" SAE 61 & 62    A & B - 1-1/4" SAE 61 & 62  
 X & Y - 3/8" BSPP    L - 3/8" BSPP    G - 1/4" BSPP

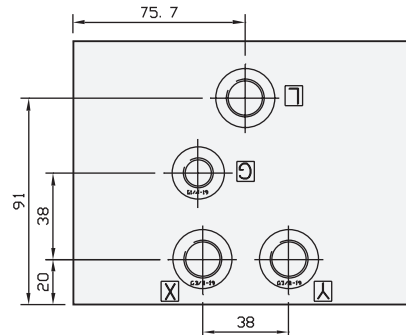
### Included Components

**Socket Head Cap Screws :** (Inc. 2 x M12 Nuts) 2 each M12 x 100  
**Flat Washers :** 2 each M12

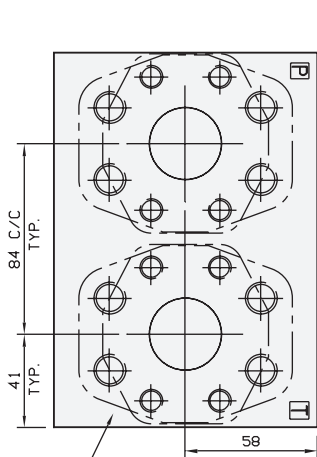
### Technical Details

CETOP 7

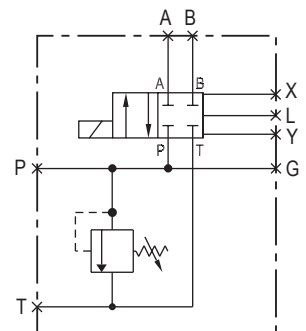
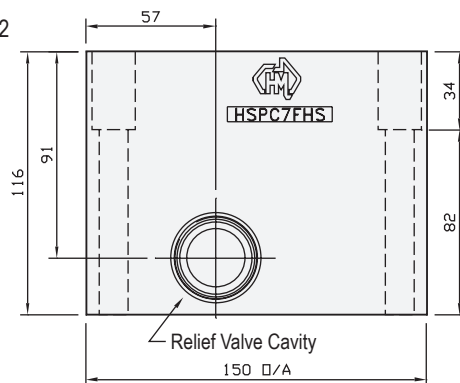
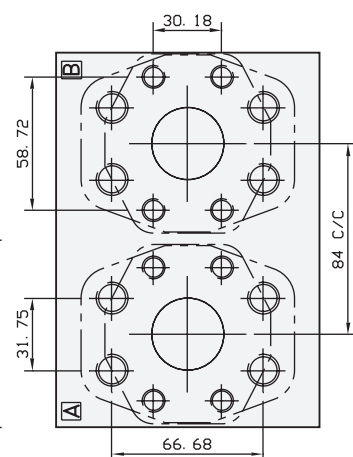
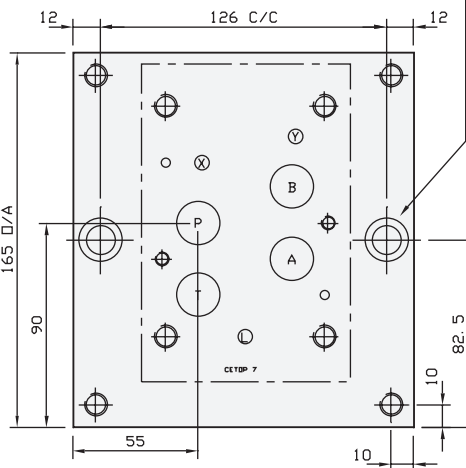
**MTG THREAD INFORMATION**  
 SAE CODE 61 - M10 x 15 DP  
 SAE CODE 62 - M14 x 21 DP



4 off M10 Lift Points  
 Mtgs to Suit M12 x 100 S.H.C.S



BOTH ENDS SUIT  
 1-1/4" CODE 61 & CODE 62  
 SAE FLANGES



Manifold Circuit  
 (Shown With Relief Option)

Projection



### Subplate - Without Relief Cavity

Part Number	Nominal Mass Kg
HSPC7FH	19.0

RELIEF VALVES SOLD SEPARATELY

SUN RELIEF VALVE RPIC-LCN

Made To Order

### Subplate - With Relief Cavity

Part Number	Nominal Mass Kg
HSPC7FHS	19.0