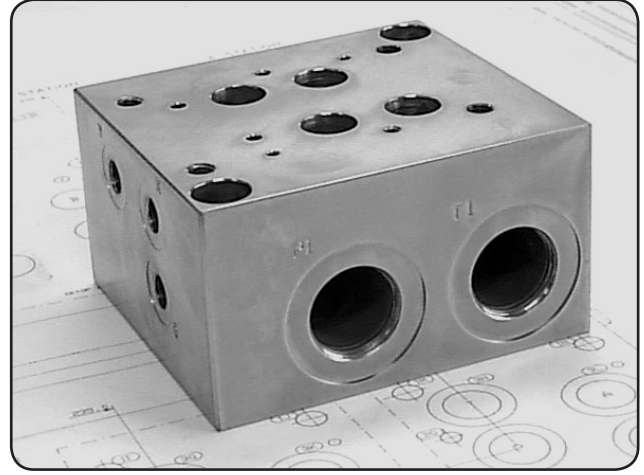
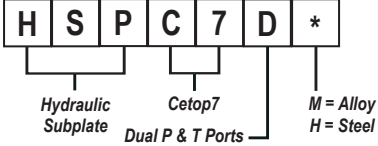




HSPC7D*

Subplate - Cetop7 - Dual P & T Ports



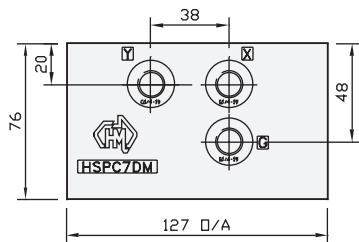
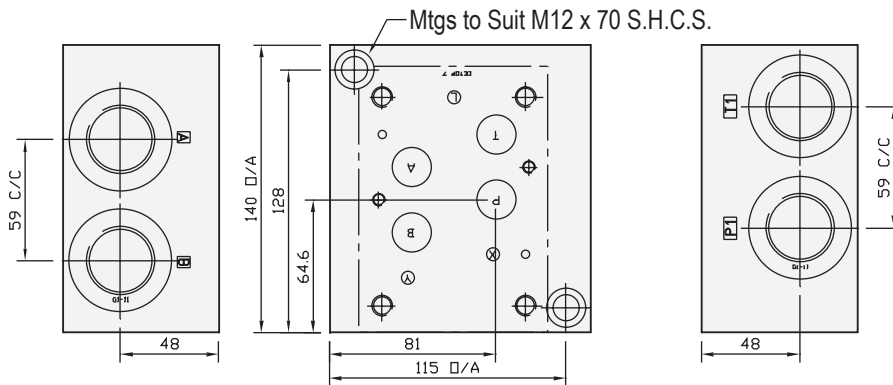
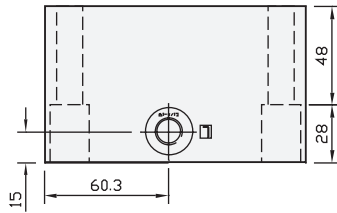
Specifications

Material :	Alloy 6061-T6	Steel - S1214
Max. Working Pressure :	Alloy - 210 Bar	Steel - 350 Bar
Surface Treatment :	Alloy - Nil	Steel - Zinc Gold Passivation
Port Sizes :	P & T - 1" BSPP	A & B - 1" BSP X, Y & L - 1/4" BSPP G - 1/4" BSPP

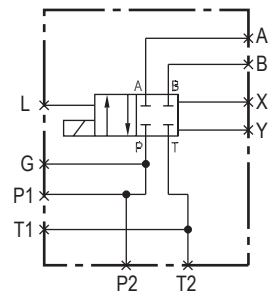
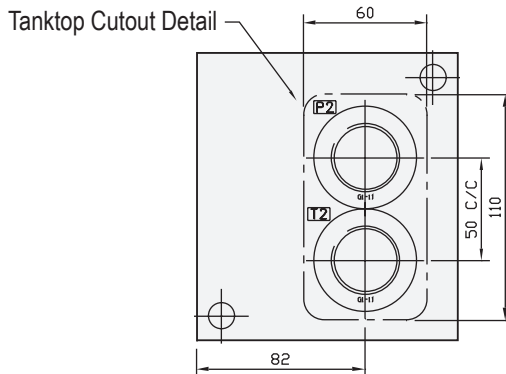
Included Components

Socket Head Cap Screws :	(Inc. 2 x M12 Nuts) 2 each M12 x 70
Flat Washers :	2 each M12

Technical Details



DESIGNED FOR TANK-TOP MOUNTING



Manifold Circuit



Part Number	Nominal Mass Kg
HSPC7DH	9.0
HSPC7DM	4.0