



HXPC5***

Crossover Plate - Cetop5



H = Steel
M = Alloy

Hydraulic Crossover Plate Cetop5

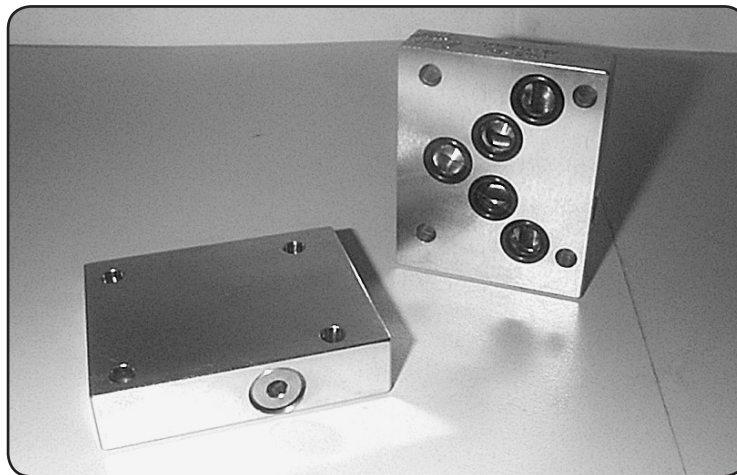
Function Descriptions - Refer to Circuits Shown

Specifications

Material :	Steel - S1214	Alloy - T6-6061
Max. Working Pressure :	Steel - 350 Bar	Alloy - 210 Bar
Surface Treatment :	Steel - Zinc Gold Passivation	Alloy - Nil

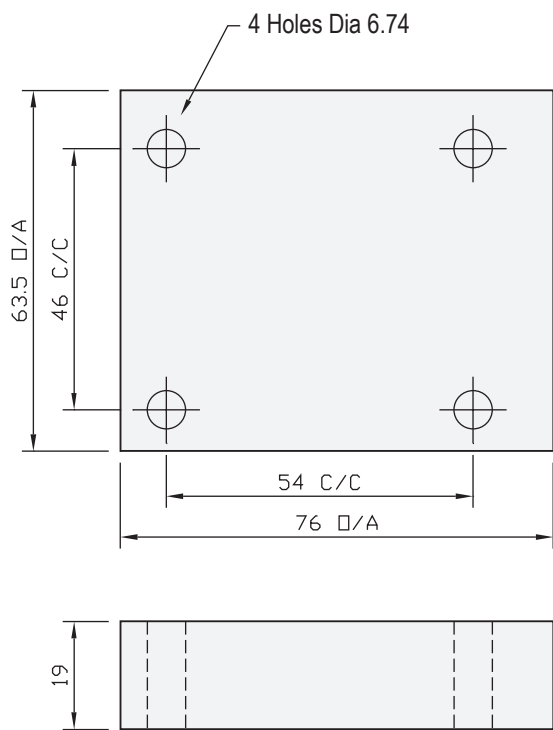
Included Components

Socket Head Cap Screws:	4 each M6 x 30
O-Rings :	HXPC5PBTA , 2 each N9-118 , 1 each N9-014 HXPC5PATB , HXPC5PT , HXPC5AB 5 each N9-014 HXPC5PA , PB , TA , TB 1 each N9-118 , 3 each N9-014



CETOP 5

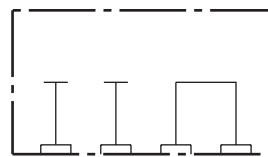
Technical Details



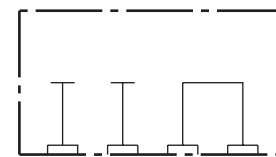
Projection



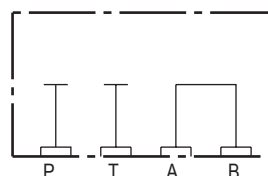
Manifold Circuits



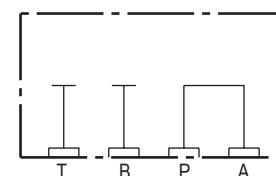
HXPC5PT*
P-Port to T-Port



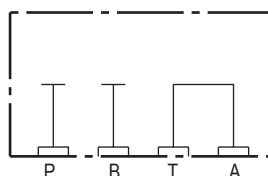
HXPC5TB*
T-Port to B-Port



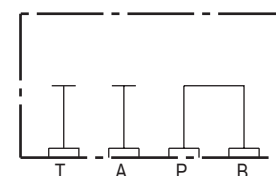
HXPC5AB*
A-Port to B-Port



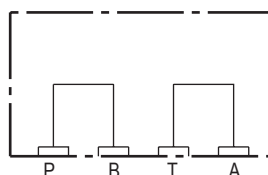
HXPC5PA*
P-Port to A-Port



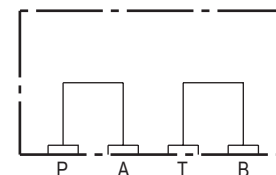
HXPC5TA*
T-Port to A-Port



HXPC5PB*
P-Port to B-Port



HXPC5PBTA*
P-Port to B-Port T-Port to A-Port



HXPC5PATB*
P-Port to A-Port T-Port to B-Port

Steel

Part Number	Nominal Mass Kg
HXPC5PTH	1.0
HXPC5ABH	1.0
HXPC5PAH	1.0
HXPC5PBH	1.0
HXPC5TAH	1.0
HXPC5TBH	1.0
HXPC5PATBH	1.0
HXPC5PBTAH	1.0

Alloy - Made to Order

Part Number	Nominal Mass Kg
HXPC5PTM	0.6
HXPC5ABM	0.6
HXPC5PAM	0.6
HXPC5PBM	0.6
HXPC5TAM	0.6
HXPC5TBM	0.6
HXPC5PATBM	0.6
HXPC5PBTAH	0.6