



HTSC5L* Tapping Sandwich - Cetop5 - L-Port

H T S C 5 L *

H T S
C 5
L
*
 Hydraulic Tapping Sandwich Cetop5 L - Port M = Alloy H = Steel



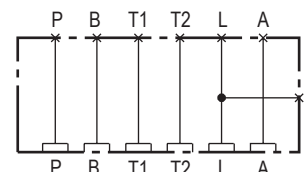
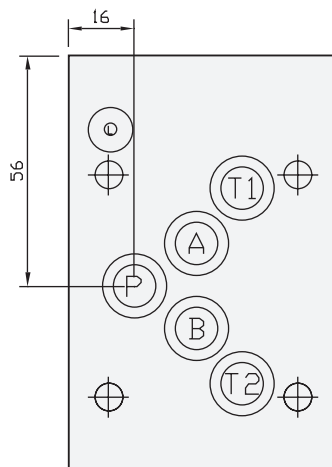
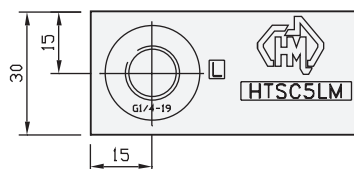
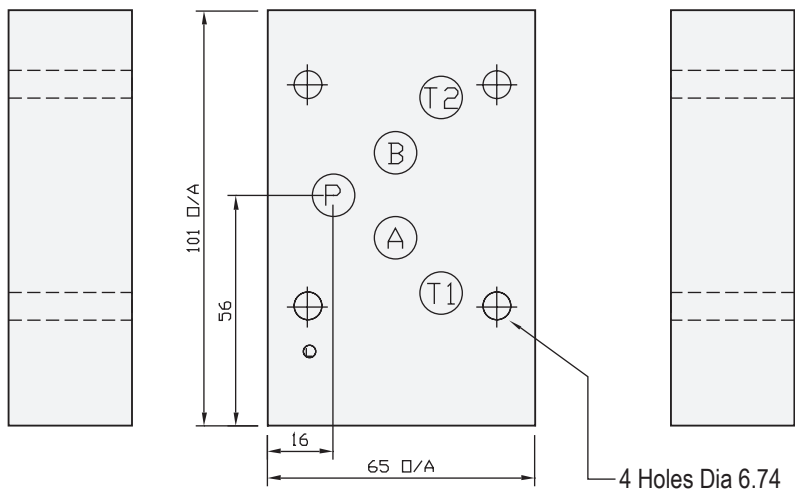
Specifications

Material :	Alloy 6061-T6	Steel - S1214
Max. Working Pressure :	Alloy - 210 Bar	Steel - 350 Bar
Surface Treatment :	Alloy - Nil	Steel - Zinc Gold Passivation
Port Sizes :	L - 1/4" BSPP	

Included Components

O-Rings : 5 each N9-014 , 1 x N9-011

Technical Details



Manifold Circuit

Projection



Part Number	Nominal Mass Kg
HTSC5LH	1.4
HTSC5LM	0.5

Made To Order

CETOP 5