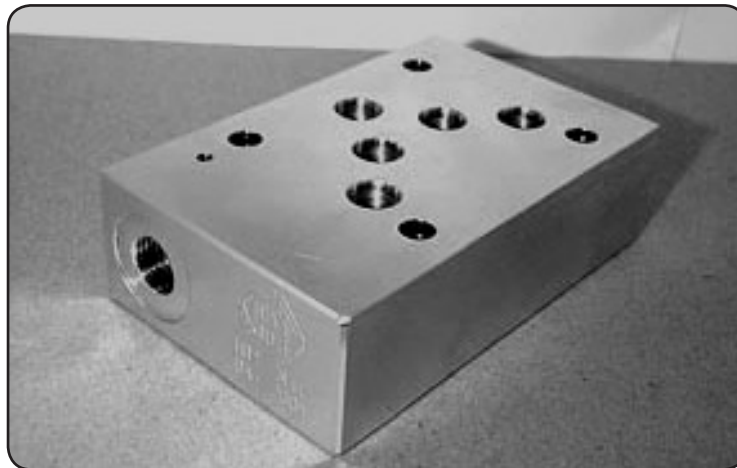




HTSC5PT* Tapping Sandwich - Cetop5 - P & T Ports

H T S C 5 P T *

Hydraulic Tapping Sandwich
 Cetop5
 P & T Ports
 M = Alloy
 H = Steel



CETOP 5

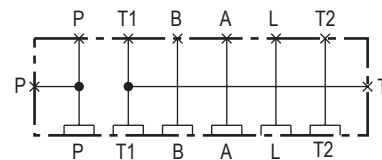
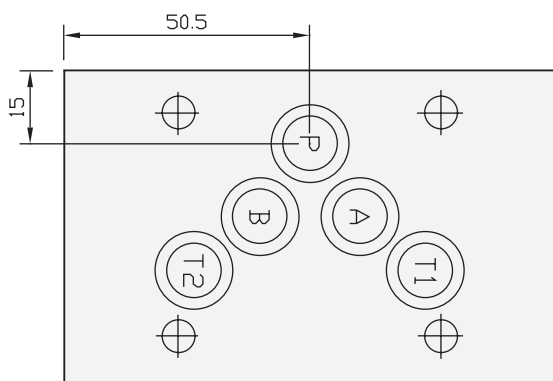
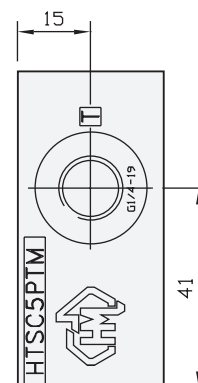
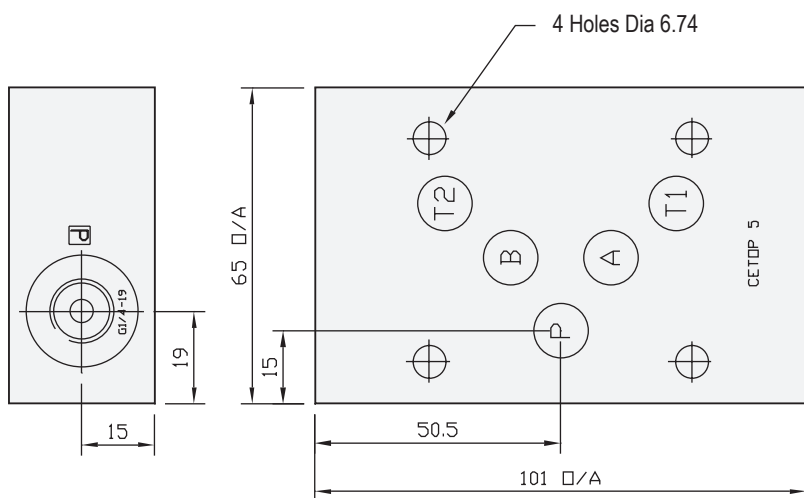
Specifications

Material :	Alloy 6061-T6	Steel - S1214
Max. Working Pressure :	Alloy - 210 Bar	Steel - 350 Bar
Surface Treatment :	Alloy - Nil	Steel - Zinc Gold Passivation
Port Sizes :	P & T - 1/4" BSPP	

Included Components

O-Rings : 5 each N9-014

Technical Details



Manifold Circuit

Projection



Part Number	Nominal Mass Kg
HTSC5PTH	1.0
HTSC5PTM	0.5