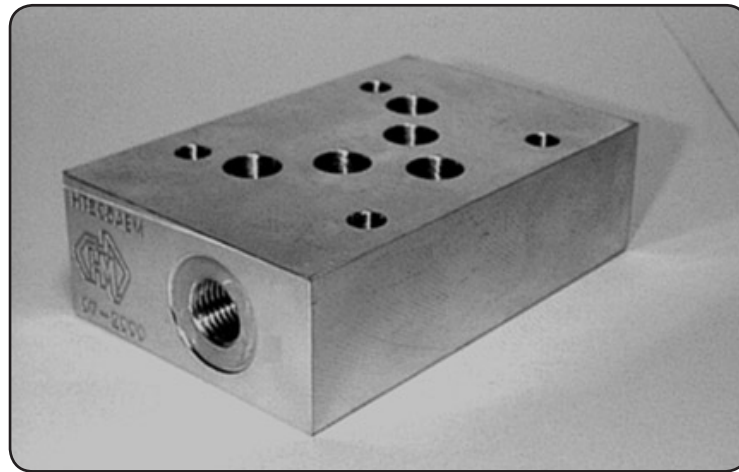
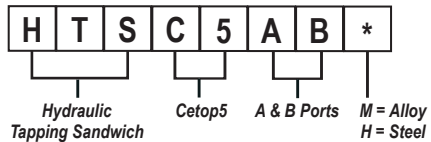




HTSC5AB*

Tapping Sandwich - Cetop5



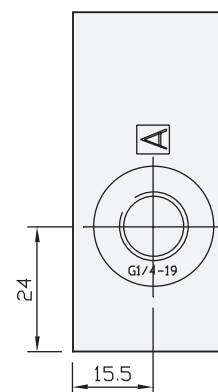
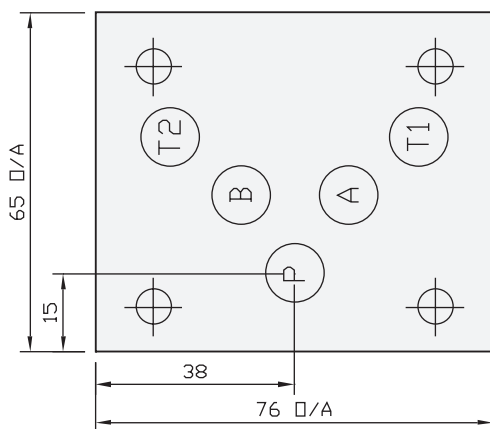
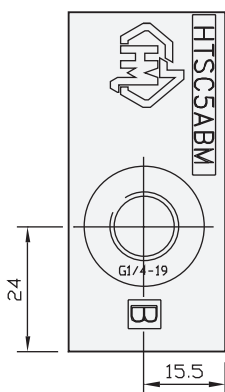
Specifications

Material :	Alloy 6061-T6	Steel - S1214
Max. Working Pressure :	Alloy - 210 Bar	Steel - 350 Bar
Surface Treatment :	Alloy - Nil	Steel - Zinc Gold Passivation
Port Sizes :	A & B - 1/4" BSPP	

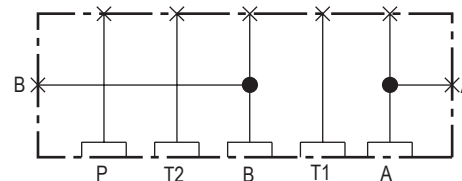
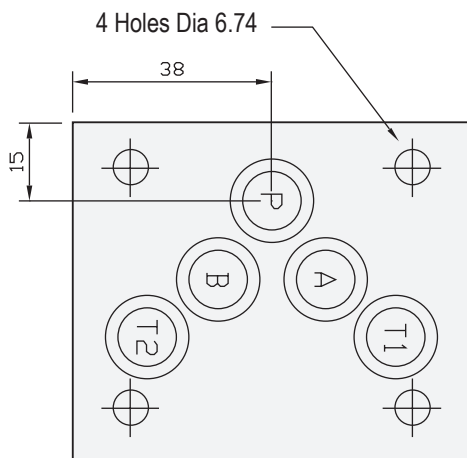
Included Components

O-Rings :	5 each N9-014
------------------	---------------

Technical Details



Not Suitable For X & Y Interface



Manifold Circuit

Projection



Part Number	Nominal Mass Kg
HTSC5ABH	1.0
HTSC5ABM	0.5