



HFSC5**H** Flow Control Sandwich - Cetop5 - Steel

H F S C 5 * * H A J

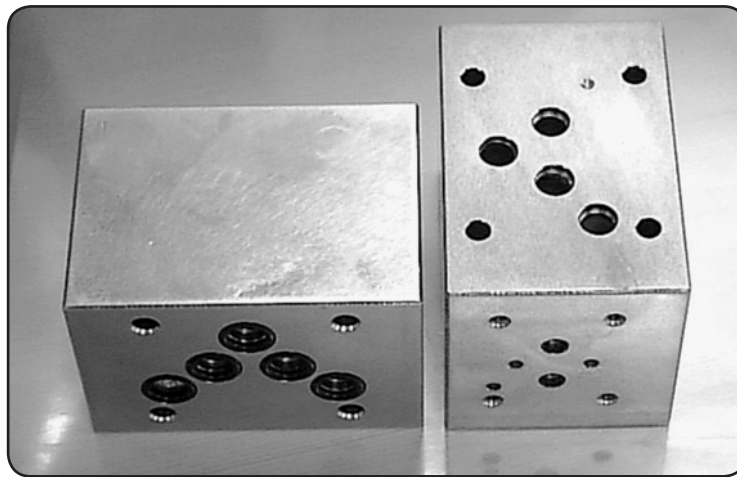
Hydraulic Flow Control Sandwich

Cetop5

H = Steel

AJ = Anti-Jump Feature
Omit if not required

Function Descriptions
Refer to Circuits for Model Selection



Specifications

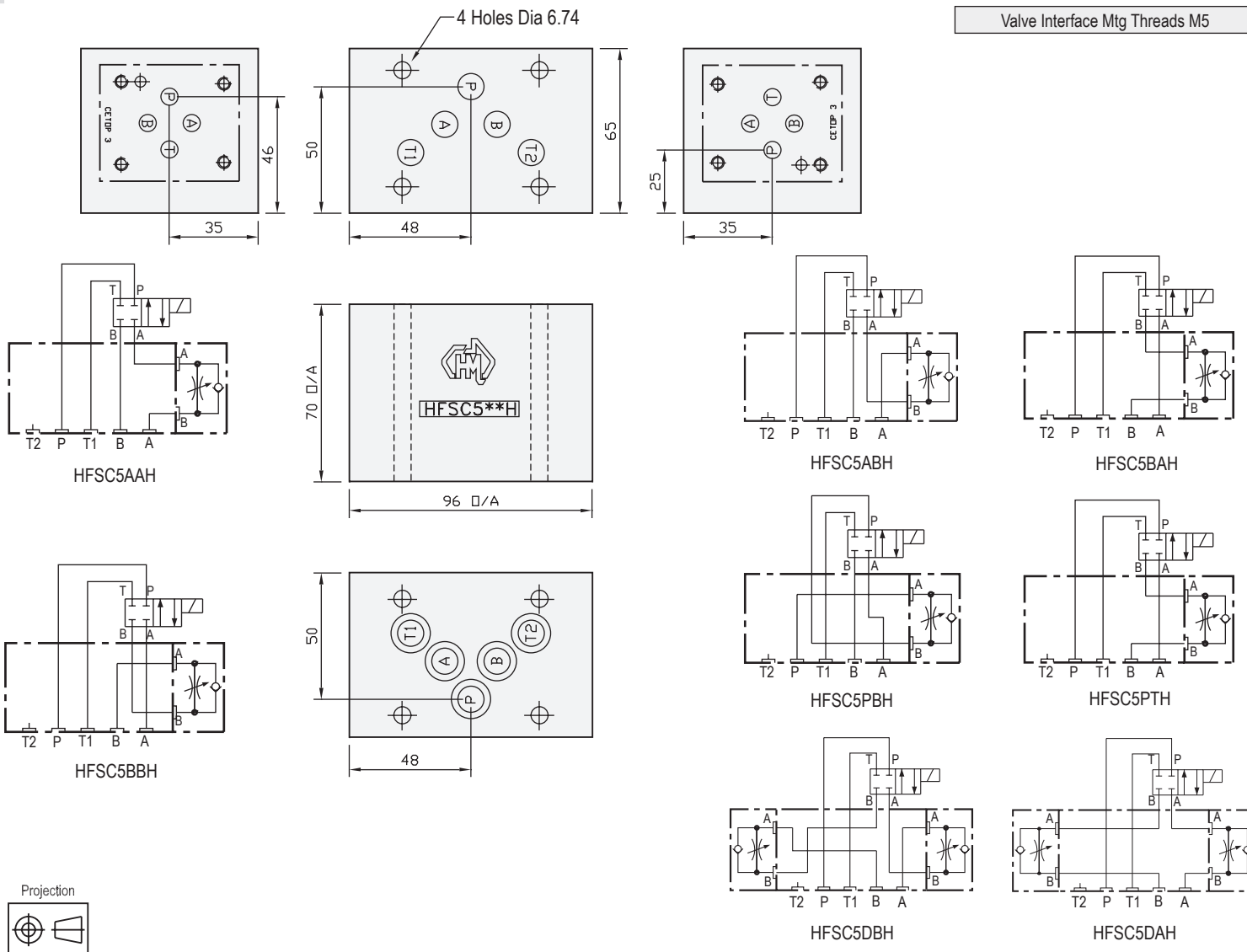
Material : H = Steel - S1214
Max. Working Pressure : Steel - 350 Bar
Surface Treatment : Steel - Zinc Gold Passivation

Included Components

O-Rings : 5 each N9-014

Technical Details

Valve Interface Mtg Threads M5



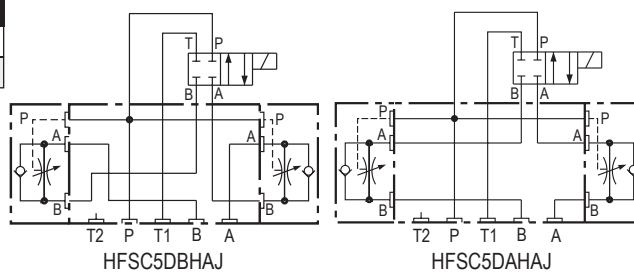
ALL FLOW CONTROLS MADE TO ORDER

Flow Control Sandwich

Part Number	Nominal Mass Kg
HFSC5AAH	3.2
HFSC5BBH	3.2
HFSC5ABH	3.2
HFSC5BAH	3.2
HFSC5PBH	3.2
HFSC5PTH	3.2
HFSC5DAH	3.2
HFSC5DBH	3.2

Part Number	Nominal Mass Kg
HFSC5DAHAJ	3.2
HFSC5DBHAJ	3.2

Flow Control Sandwich With Anti-Jump Feature



CETOP 5