



HESC5**H

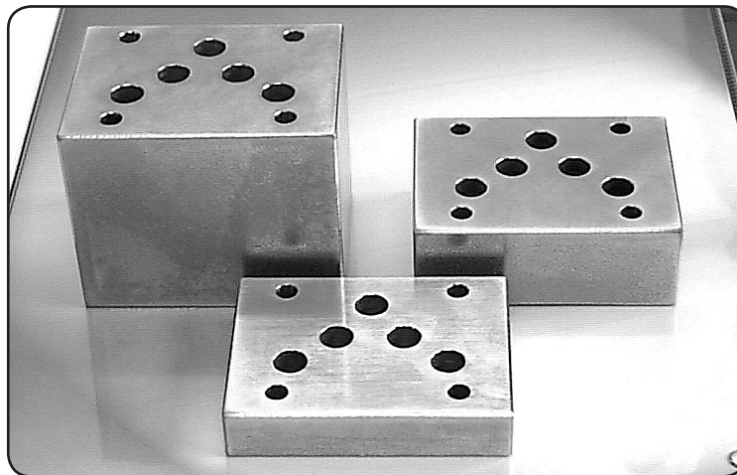
Extension Sandwich - Cetop5 - Steel

H E S C 5 * * H

H = Steel
 * * = Manifold Thickness mm
 C = Cetop5
 E S = Hydraulic Extension Sandwich

Manifold Thickness Values

- 19 = 19mm
- 30 = 30mm
- 48 = 48mm
- 70 = 70mm



CETOP 5

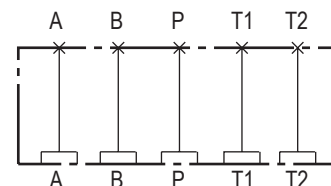
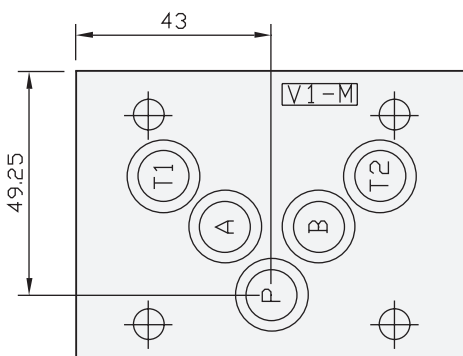
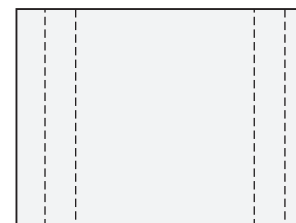
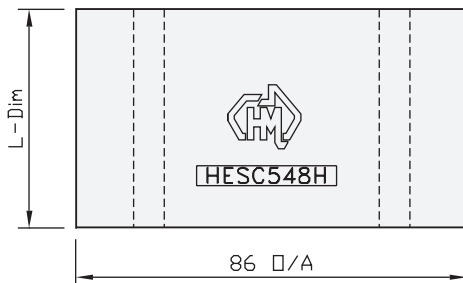
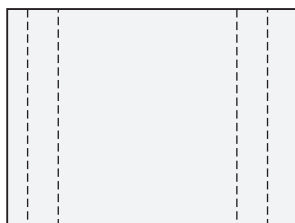
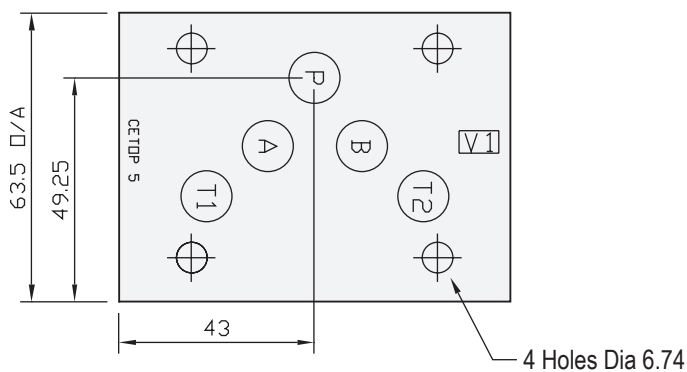
Specifications

Material : H = Steel - S1214
Max. Working Pressure : Steel - 350 Bar
Surface Treatment : Steel - Zinc Gold Passivation

Included Components

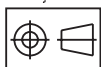
O-Rings : 5 each N9-014

Technical Details



Manifold Circuit

Projection



Part Number	L Dim	Nominal Mass Kg
HESC519H	19	0.7
HESC530H	30	1.2
HESC548H	48	2.0
HESC570H	70	2.7