

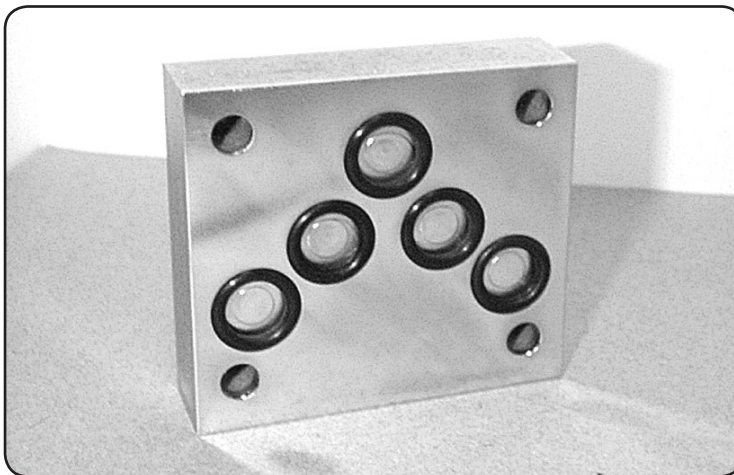


# HBPC5\*

# Blanking Plate - Cetop5

**H B P C 5 \***

Hydraulic Blanking Plate  
 Cetop5  
 M = Alloy  
 H = Steel



### Specifications

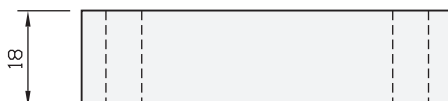
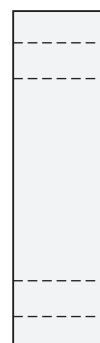
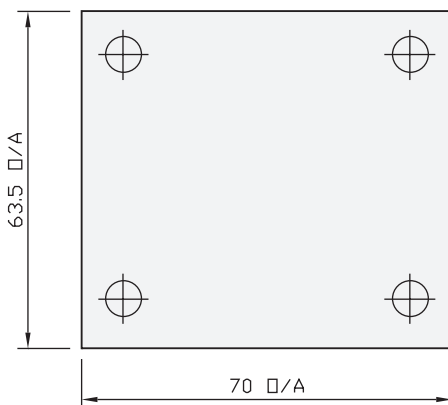
<b>Material :</b>	Alloy 6061-T6	Steel - S1214
<b>Max. Working Pressure :</b>	Alloy - 210 Bar	Steel - 350 Bar
<b>Surface Treatment :</b>	Alloy - Nil	Steel - Zinc Gold Passivation

### Included Components

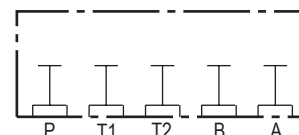
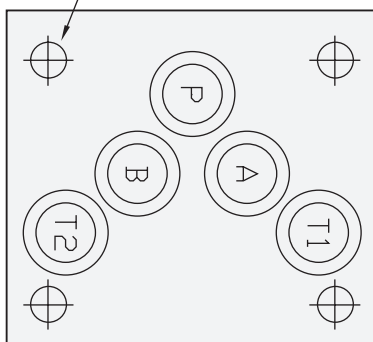
<b>Socket Head Cap Screws :</b>	4 each M6 x 30
<b>O-Rings :</b>	5 x N9-014

### Technical Details

CETOP 5



Mtgs to Suit M6 x 30 S.H.C.S.



Manifold Circuit

Projection



Part Number	Nominal Mass Kg
HBPC5H	0.7
HBPC5M	0.3