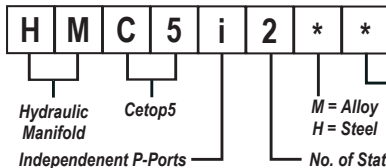




# HMC5i2 \*\*

# Manifold - Cetop5 - Independent P-Ports



C = Common Relief Cavity C10-2  
S = Sun Relief Cavity T10-A  
Omit if Relief Not Required

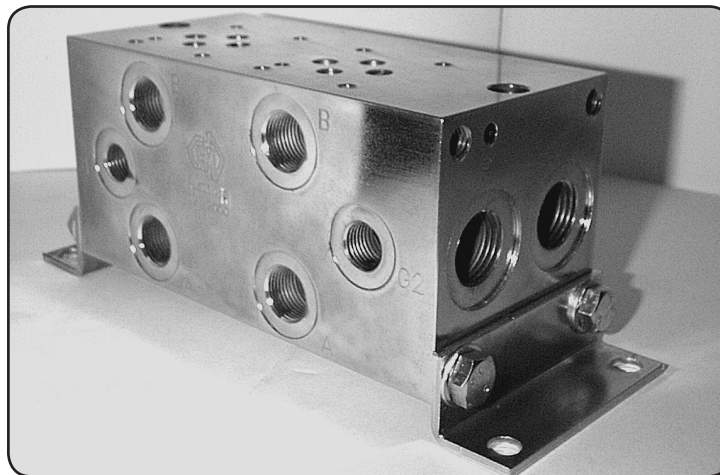
M = Alloy  
H = Steel  
No. of Stations

### Specifications

Material :	Alloy 6061-T6	Steel - S1214
Max. Working Pressure :	Alloy - 210 Bar	Steel - 350 Bar
Surface Treatment :	Alloy - Nil	Steel - Zinc Gold Passivation
Port Sizes :	P & T - 3/4" BSPP	A & B - 1/2" BSPP G - 1/4" BSPP

### Included Components

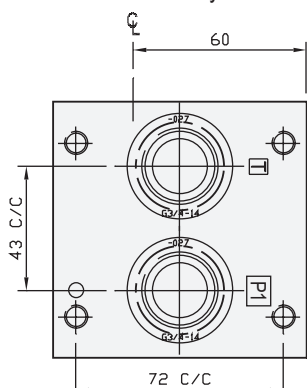
Mounting Brackets :	2 each HMMBC5H
Hex. Head Cap Screws :	8 each M8 x 16
Socket Head Cap Screws :	2 each M8 x 90 (Inc. 2 x M8 Nuts)
Flat Washers :	8 each M8
O-Rings : (For Module Mtg)	2 each N9-029



### Technical Details

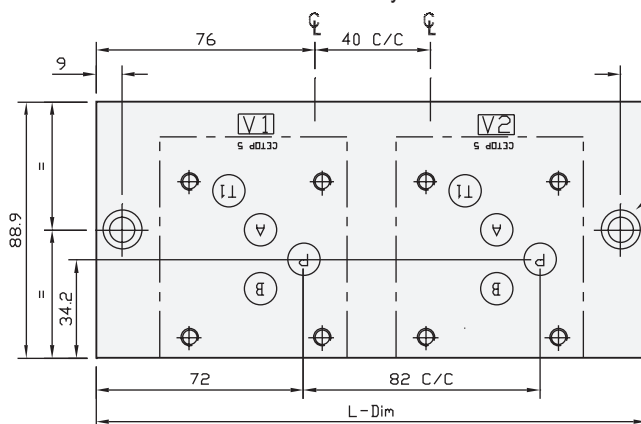
Valve Interface Mtg Threads M6

Relief Valve Cavity

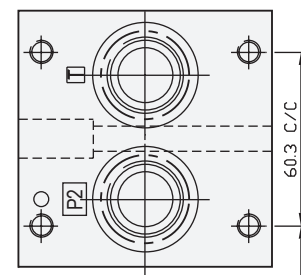


P & T-Ports Spotfaced  
Both Ends Suit N9-029 O-Ring

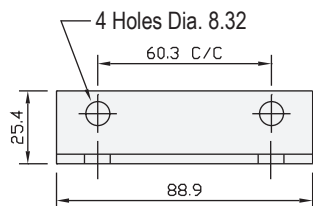
Relief Valve Cavity



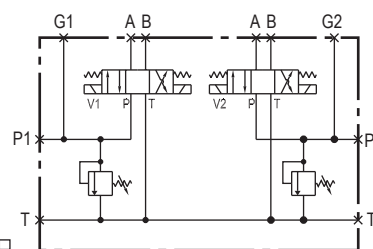
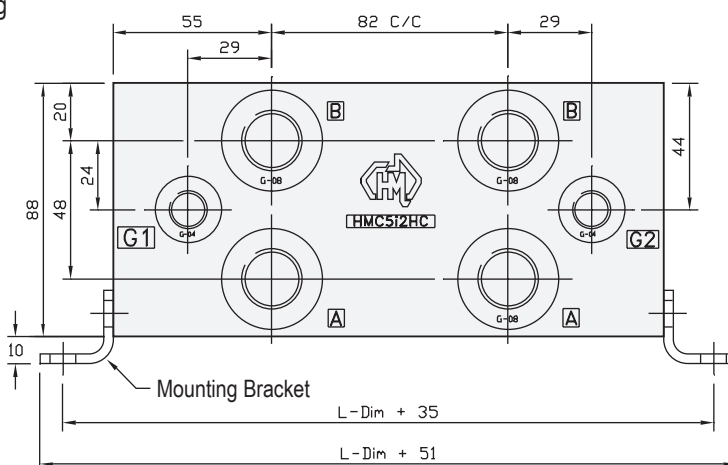
Mtgs to Suit M8 x 90 S.H.C.S.



M8 Mtgs to Suit Std. Cetop5  
Mounting Bracket - HMMBC5H



Mounting Bracket Detail



Manifold Circuit  
(Shown With Relief Option)

Projection



Multi-Station Options Available on Request

#### Manifold - Without Relief Cavity

Part Number	L Dim	Nominal Mass Kg
HMC5i2H	155	11.5
HMC5i2M	155	4.2

#### Manifold - With Relief Cavity - Alloy

Part Number	ALLOY
HMC5i2MC	
HMC5i2MCC	
HMC5i2MS	
HMC5i2MSS	

SUN RELIEF VALVE RPEC-LAN (Suit Alloy)  
SUN RELIEF VALVE RPEC-LCN (Suits Steel)  
COMMON RELIEF VALVE RP100-ABN (Suits Alloy)  
COMMON RELIEF VALVE RP100-ACN (Suits Steel)

#### Manifold - With Relief Cavity - Steel

Part Number	STEEL
HMC5i2HC	
HMC5i2HCC	
HMC5i2HS	
HMC5i2HSS	

RELIEF VALVES SOLD SEPARATELY  
PRICES SUBJECT TO CHANGE WITHOUT NOTICE