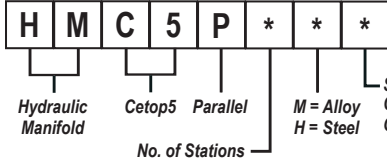




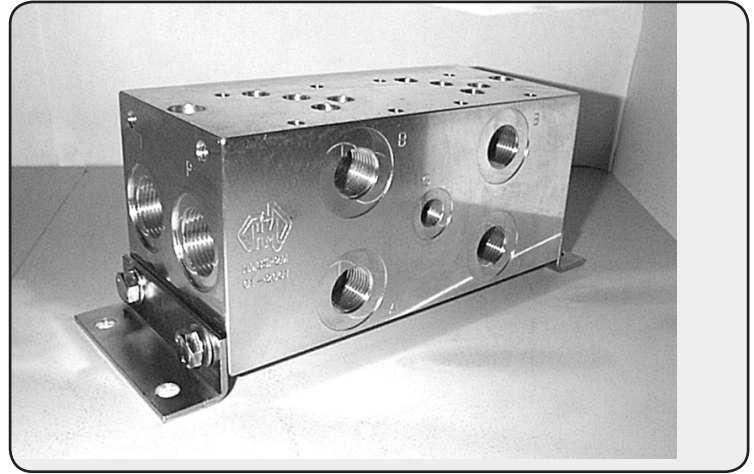
# HMC5P\*\*\*

# Manifold - Cetop5 - Parallel



M = Alloy  
H = Steel

S = Sun Relief Cavity T10-A  
C = Common Relief Cavity C10-2  
Omit If Relief Not Required



### Specifications

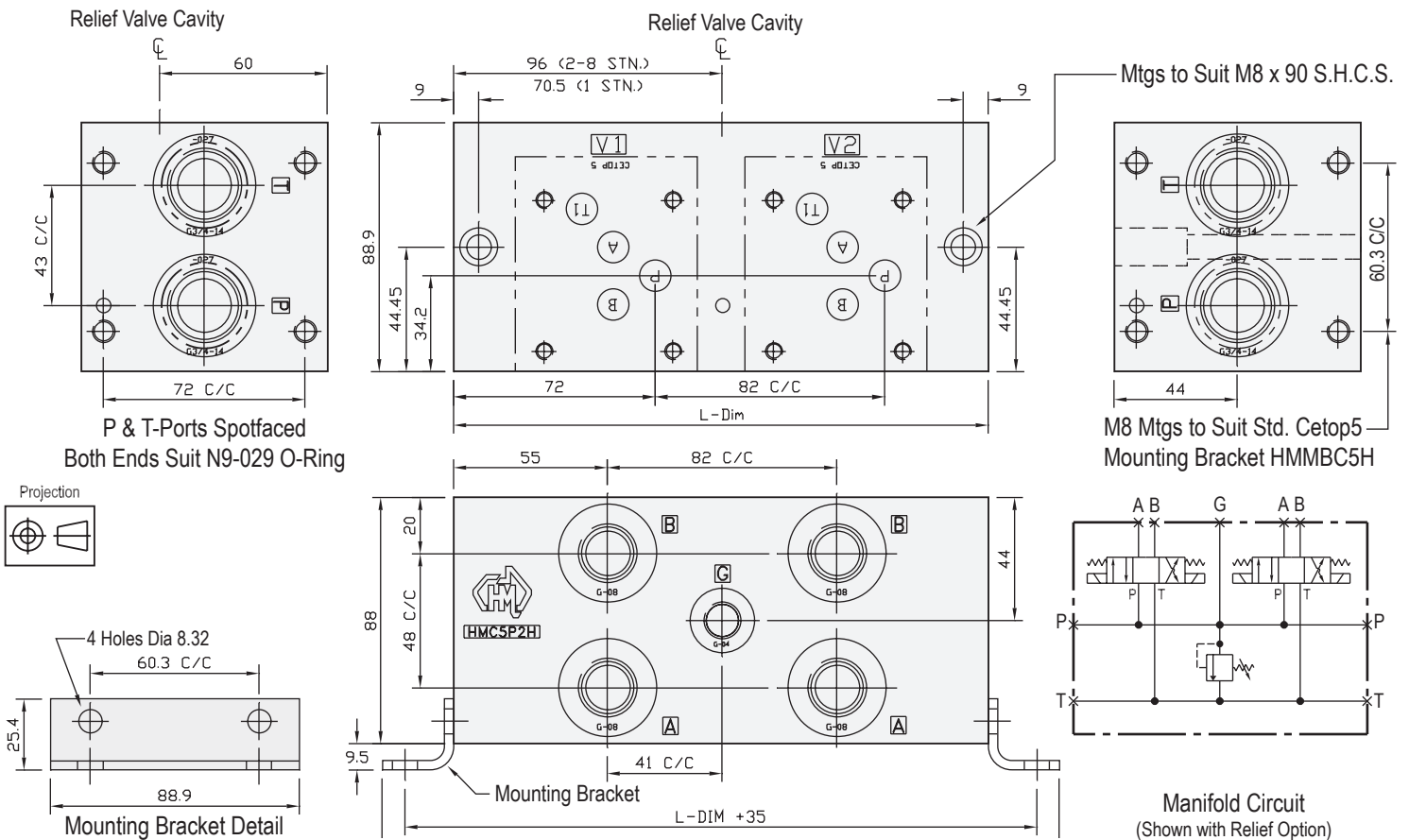
Material :	Alloy 6061-T6	Steel - S1214
Max. Working Pressure :	Alloy - 210 Bar	Steel - 350 Bar
Surface Treatment :	Alloy - Nil	Steel - Zinc Gold Passivation
Port Sizes :	P & T - 3/4" BSPP	A & B - 1/2" BSPP G - 1/4" BSPP

### Included Components

Mounting Brackets :	2 each HMMBC5H
Hex. Head Set Screws :	8 each M8 x 16
Socket Head Cap Screws :	2 each M8 x 90 (Inc. 2 x M8 Nuts)
Flat Washers :	2 each M8
O-Rings : (For Module Mtg)	2 each N9-029

### Technical Details

Valve Interface Mtg Threads M6



### Manifold - Without Relief Cavity

Steel			Alloy		
Part Number	L Dim	Nominal Mass Kg	Part Number	L Dim	Nominal Mass Kg
HMC5P1H	108	6.0	HMC5P1M	108	2.5
HMC5P2H	191	10.3	HMC5P2M	191	3.5
HMC5P3H	273	14.5	HMC5P3M	273	5.0
HMC5P4H	355	19.5	HMC5P4M	355	6.5
HMC5P5H	437	25.6	HMC5P5M	437	8.0
HMC5P6H	519	27.5	HMC5P6M	519	9.5
HMC5P7H	601	32.1	HMC5P7M	601	11.0
HMC5P8H	683	37.5	HMC5P8M	683	12.5

### Manifold - With Relief Cavity

Steel		Alloy	
Part Number	Part Number	Part Number	Part Number
HMC5P1H * S or C	HMC5P1M * S or C	HMC5P1H * S or C	HMC5P1M * S or C
HMC5P2H * S or C	HMC5P2M * S or C	HMC5P2H * S or C	HMC5P2M * S or C
HMC5P3H * S or C	HMC5P3M * S or C	HMC5P3H * S or C	HMC5P3M * S or C
HMC5P4H * S or C	HMC5P4M * S or C	HMC5P4H * S or C	HMC5P4M * S or C
HMC5P5H * S or C	HMC5P5M * S or C	HMC5P5H * S or C	HMC5P5M * S or C
HMC5P6H * S or C	HMC5P6M * S or C	HMC5P6H * S or C	HMC5P6M * S or C
HMC5P7H * S or C	HMC5P7M * S or C	HMC5P7H * S or C	HMC5P7M * S or C
HMC5P8H * S or C	HMC5P8M * S or C	HMC5P8H * S or C	HMC5P8M * S or C

Multiple Relief Cavities - Optional  
3 Station and Above Can be Manufactured on Request  
1 & 2 Stations - Cavity Module Sold Separately HMC5H\*

4 to 8 STATION MANIFOLDS MADE TO ORDER  
RELIEF VALVES SOLD SEPARATELY

SUN RELIEF VALVE RPEC-LAN (Suits Alloy)  
SUN RELIEF VALVE RPEC-LCN (Suits Steel)  
COMMON RELIEF VALVE RP100-ABN (Suits Alloy)  
COMMON RELIEF VALVE RP100-ACN (Suits Steel)

CETOP 5