



# HS3104S1\* Rotational Sandwich Body - Cetop3 - Single C10-4 Cavity

## A or B-Port Vented Counterbalance

**H S 3 10 4 S 1 \***

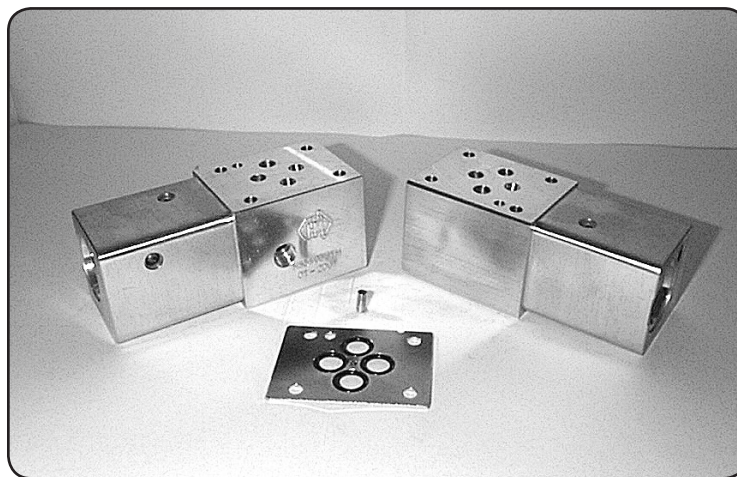
H = Steel  
 S = Alloy  
 3 = Hydraulic Sandwich Cetop3  
 10 = C10-4 Cavity  
 4 = Single Cavity  
 S = 'A' or 'B'-Port Counterbalance  
 1 = Function Example Refer to Circuit  
 \* = M = Alloy, H = Steel

### Specifications

Material :	Alloy 6061-T6	Steel - S1214
Max. Working Pressure :	Alloy - 210 Bar	Steel - 350 Bar
Surface Treatment :	Alloy - Nil	Steel - Zinc Gold Passivation

### Included Components

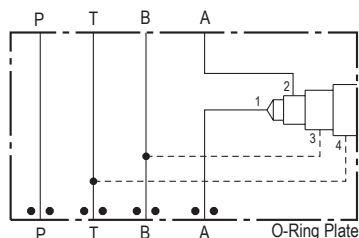
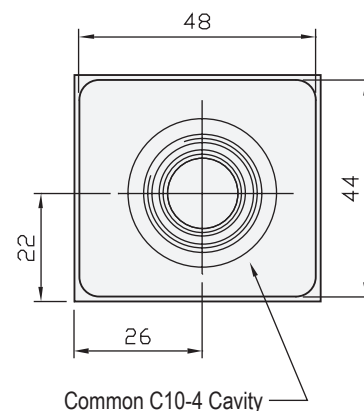
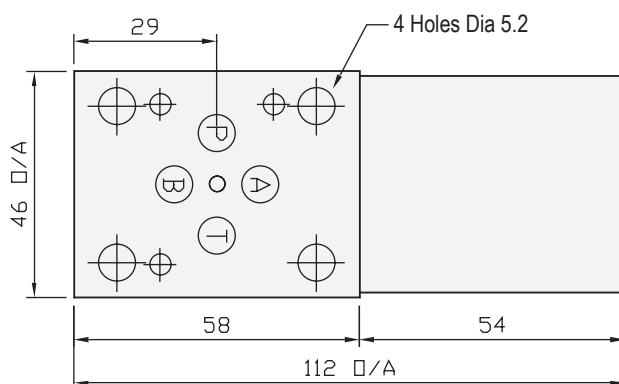
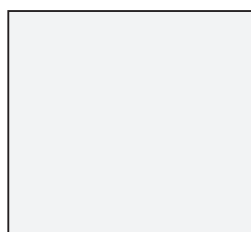
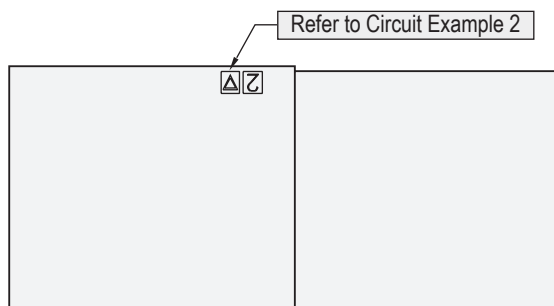
O-Ring Plate :	1 each HSC30P1H
O-Rings :	4 each N9-012
Locating Pin :	1 each Dia. 4 mm x 10 mm



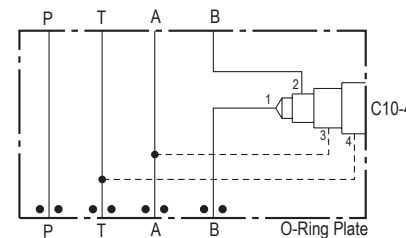
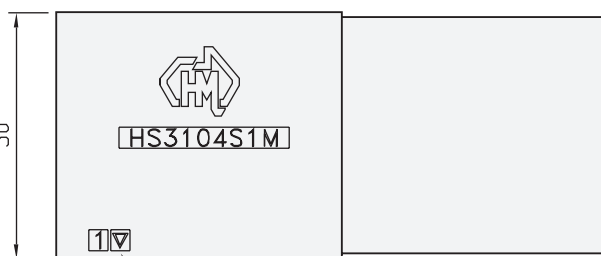
CETOP 3

### Technical Details

Projection



**Circuit Option, Example 1**  
1 - Vented Counterbalance 'A'-Port



**Circuit Option, Example 2**  
1 - Vented Counterbalance 'B'-Port

Industry Std. C10-4 Cavity Form Suitable for the Following Valve Manufacturers :  
**Modular , Parker , Hydraforce , Compact & Sterling**

Please Ensure Valve Selection is Suitable for your Application  
For More Information Contact H.M.A. Sales

Part Number	Nominal Mass Kg
HS3104S1H	1.5
HS3104S1M	0.5

**HSC30P1H** - O-Ring Plates  
Also Available Separately