



# HS3103S1\* Sandwich Body - Cetop3 - Single C10-3 Cavity

## P-Port Reducer

**H S 3 10 3 S 1 \***

Hydraulic Sandwich Cetop3

C10-3 Cavity

Single Cavity

'P'-Port Reducer, 'T'-Port Drain  
Function Example Refer to Circuit

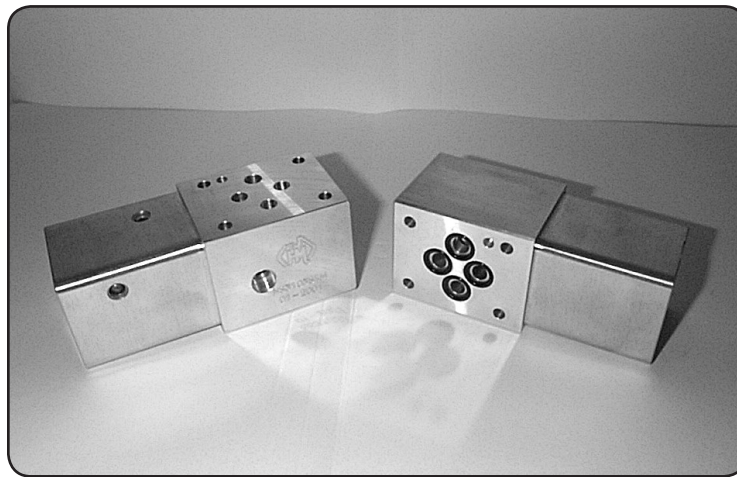
### Specifications

Material :	Alloy 6061-T6	Steel - S1214
Max. Working Pressure :	Alloy - 210 Bar	Steel - 350 Bar
Surface Treatment :	Alloy - Nil	Steel - Zinc Gold Passivation

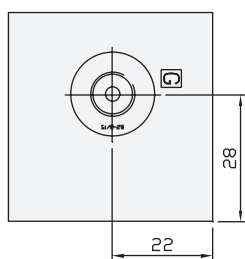
### Included Components

O-Rings :	4 each N9-012
Locating Pin :	1 each Dia. 4 mm x 10 mm

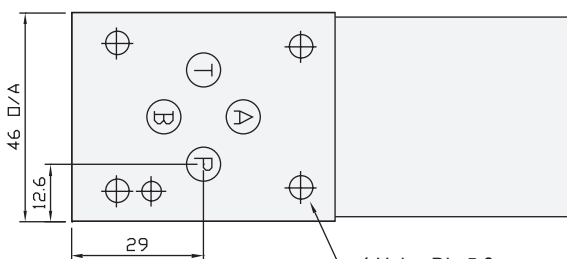
### Technical Details



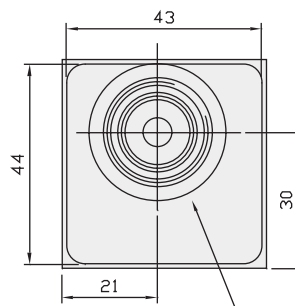
CETOP 3



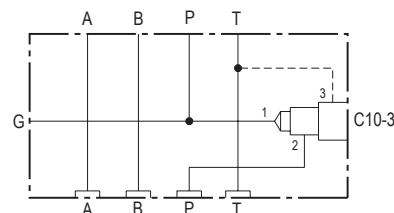
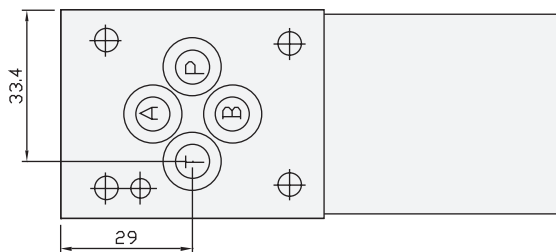
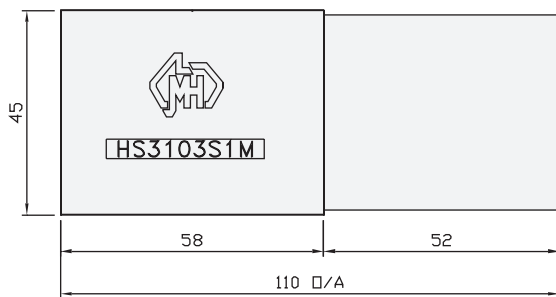
Gauge Port 1/8" BSPP



4 Holes Dia 5.2



Common C10-3 Cavity



#### Manifold Circuit

- 1 - 3 Way N.C. Valve
- 2 - Pressure Reducing
- 3 - Pressure Relieving

Projection



Part Number	Nominal Mass Kg
HS3103S1H	2.0
HS3103S1M	0.6

Industry Std. C10-3 Cavity Form Suitable for the Following Valve Manufacturers :  
**Modular , Delta , Parker , Compact & Sterling**

Please Ensure Valve Selection is Suitable for your Application  
For More Information Contact H.M.A. Sales