



# HS3102D2\* Sandwich Body - Cetop3 - Dual C10-2 Cavity

## A & B-Ports Crossline Relief

**H S 3 10 2 D 2 \***

**H** Hydraulic Sandwich Cetop3  
**S** Common C10-2 Cavity  
**3** Dual Cavity  
**10** 'A' & 'B'-Port Crossline Relief  
**2** Function Example Refer to Circuit  
**D** M = Alloy  
**2** H = Steel  
**\***

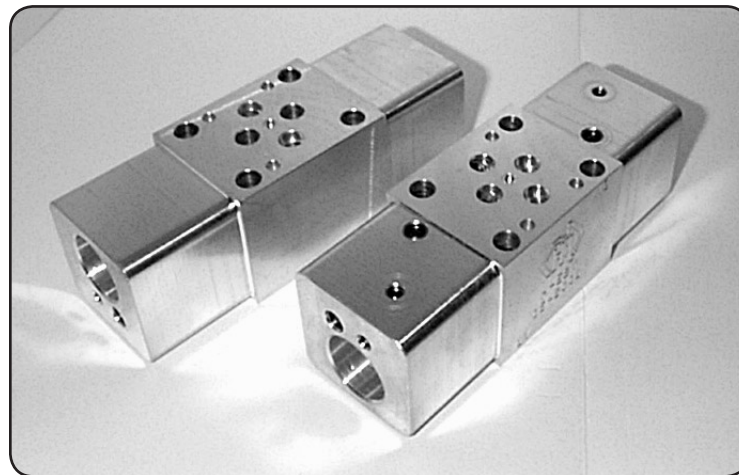
### Specifications

<b>Material :</b>	Alloy 6061-T6	Steel - S1214
<b>Max. Working Pressure :</b>	Alloy - 210 Bar	Steel - 350 Bar
<b>Surface Treatment :</b>	Alloy - Nil	Steel - Zinc Gold Passivation

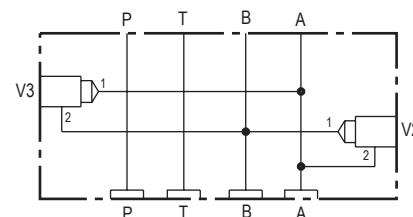
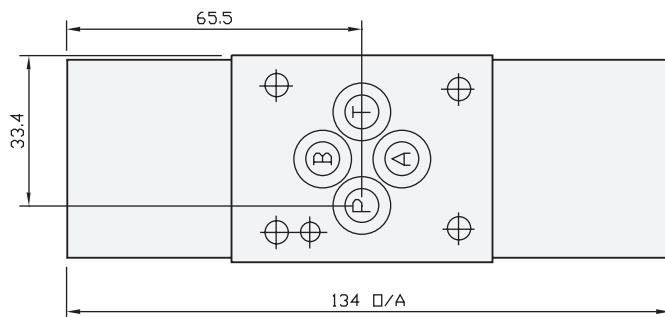
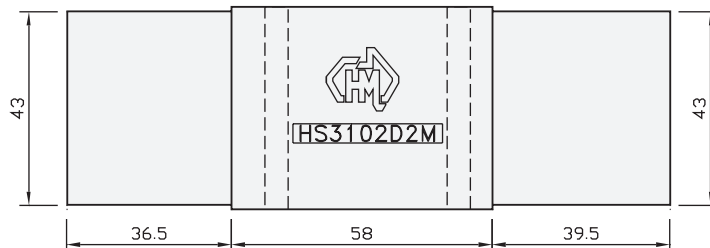
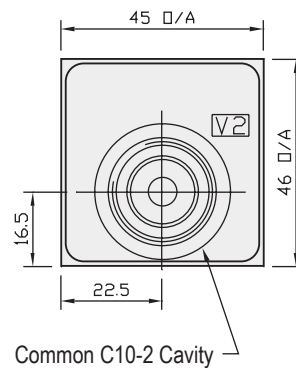
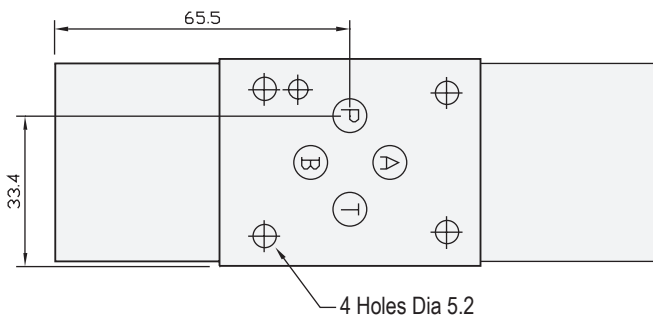
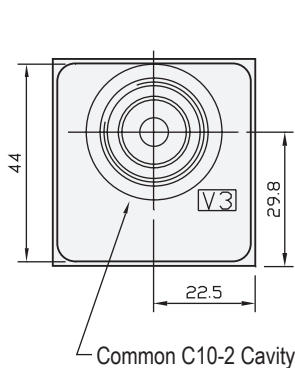
### Included Components

<b>O-Rings :</b>	4 each N9-012
<b>Locating Pin :</b>	1 each Dia. 4 mm x 10 mm

### Technical Details



CETOP 3



**Manifold Circuit**

- 1 - Dual Solenoid Crossover
- 2 - Dual N.O. Solenoid Crossover
- 3 - Dual Crossover Needle Valve
- 4 - Dual Crossover Relief

Projection



Part Number	Nominal Mass Kg
HS3102D2H	2.5
HS3102D2M	0.7

Industry Std. C10-2 Cavity Form Suitable for the Following Valve Manufacturers :  
**Modular , Delta , Parker , Hydraforce , Compact & Sterling**

Please Ensure Valve Selection is Suitable for your Application  
 For More Information Contact H.M.A. Sales

**SOLD SEPARATELY IF REQUIRED**  
 COMMON RELIEF VALVE - RP100-ABN (Suits Alloy) - RP100-ACN (Suits Steel)