



# HS3102S5\* Rotational Sandwich Body - Cetop3 - Single C10-2 Cavity

## P or T-Ports Interupt

**H S 3 10 2 S 5 \***

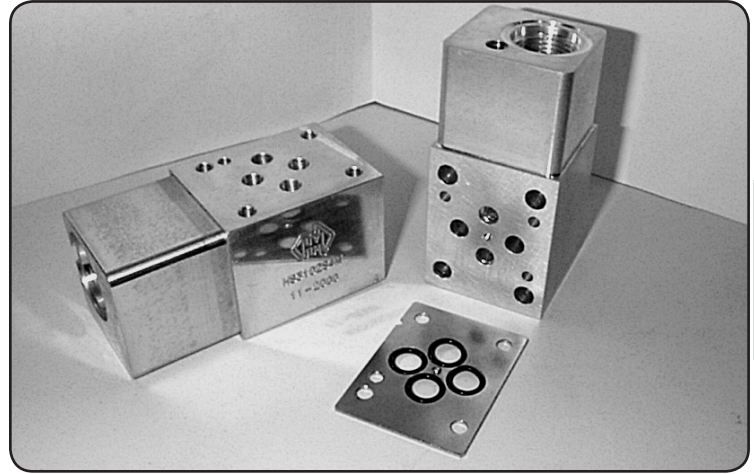
H Hydraulic Sandwich Cetop3  
 S Common C10-2 Cavity  
 3 Single Cavity  
 10 'P' & 'T'-Ports Interupt  
 2 Function Examples Refer to Circuit Options  
 S M = Alloy  
 H = Steel

### Specifications

Material :	Alloy 6061-T6	Steel - S1214
Max. Working Pressure :	Alloy - 210 Bar	Steel - 350 Bar
Surface Treatment :	Alloy - Nil	Steel - Zinc Gold Passivation

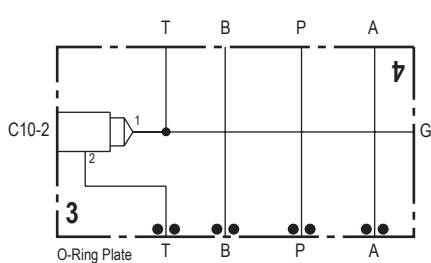
### Included Components

O-Ring Plate :	1 each HSC30P1H
O-Rings :	4 each N9-012
Locating Pin :	1 each Dia. 4 mm x 10 mm



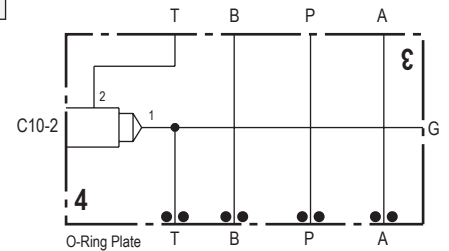
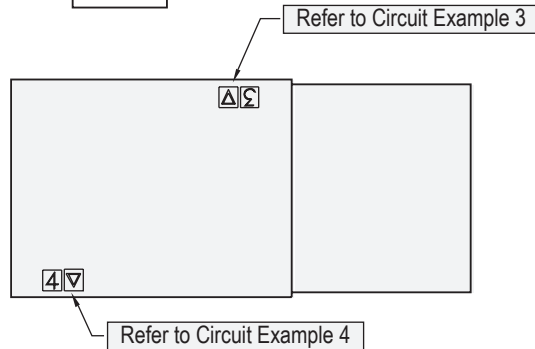
CETOP 3

### Technical Details



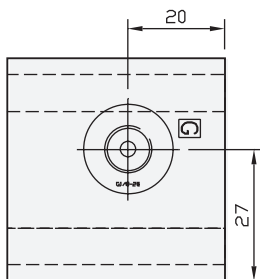
**Circuit Option , Example 3**

- 1 - Back Pressure 'T'-Port
- 2 - Off / On 'T'-Port
- 3 - On / Off 'T'-Port
- 4 - P.C. Flow Regulator
- 5 - Needle Valve

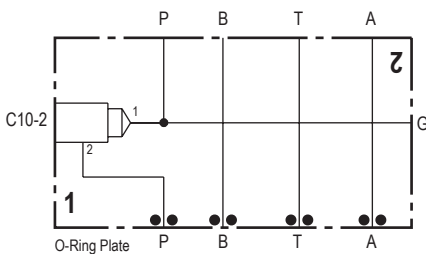
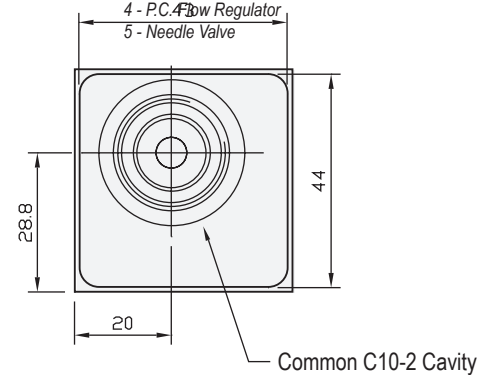
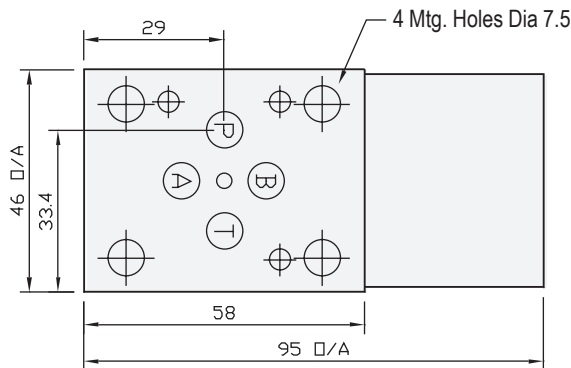


**Circuit Option , Example 4**

- 1 - Load Check 'T'-Port
- 2 - Off / On 'T'-Port
- 3 - On / Off 'T'-Port
- 4 - P.C. Flow Regulator
- 5 - Needle Valve

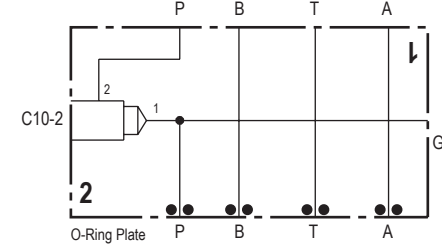
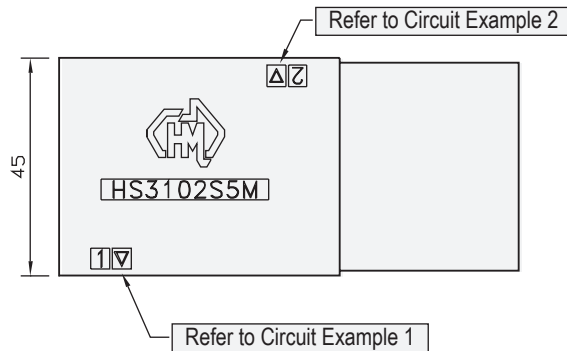


Gauge Port 1/8" BSPP



**Circuit Option , Example 1**

- 1 - Back Pressure 'P'-Port
- 2 - Off / On 'P'-Port
- 3 - On / Off 'P'-Port
- 4 - P.C. Flow Regulator
- 5 - Needle Valve



**Circuit Option , Example 2**

- 1 - Load Check 'P'-Port
- 2 - Off / On 'P'-Port
- 3 - On / Off 'P'-Port
- 4 - P.C. Flow Regulator
- 5 - Needle Valve

Part Number	Nominal Mass Kg
HS3102S5H	1.5
HS3102S5M	0.5

HSC30P1H - O-Ring Plates  
Also Available Separately

Industry Std. C10-2 Cavity Form Suitable for the Following Valve Manufacturers :  
**Modular , Delta , Parker , Hydraforce , Compact & Sterling**

Please Ensure Valve Selection is Suitable for your Application  
For More Information Contact H.M.A. Sales

**SOLD SEPARATELY IF REQUIRED**  
COMMON RELIEF VALVE - RP100-ABN (Suits Alloy) - RP100-ACN (Suits Steel)