



# HS3102S4\* Sandwich Body - Cetop3 - Single C10-2 Cavity

## P-Port Interrupt

**H S 3 10 2 S 4 \***

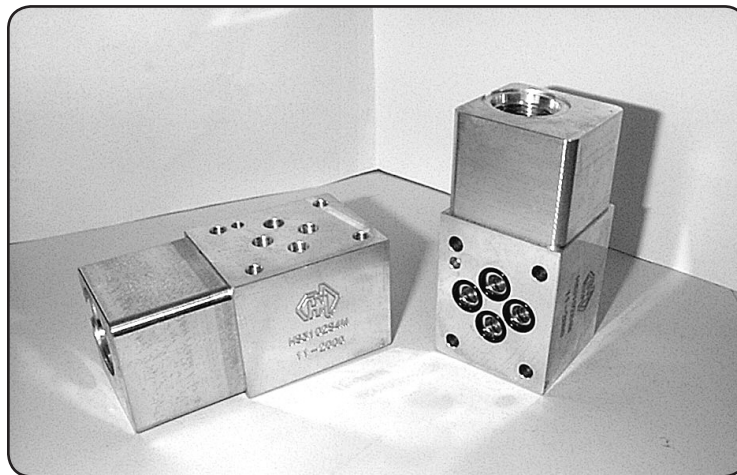
**H** Hydraulic Sandwich Cetop3  
**S** Common C10-2 Cavity  
**3** Single Cavity  
**10** M = Alloy  
**2** H = Steel  
**S** 'P'-Port Interrupt  
**4** Refer to Circuit for Function  
**\***

### Specifications

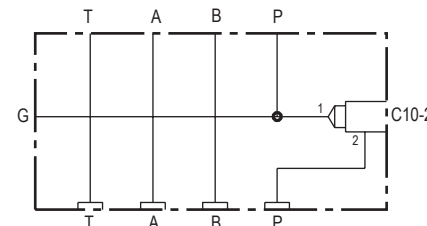
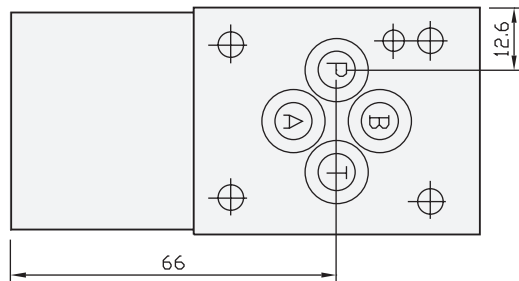
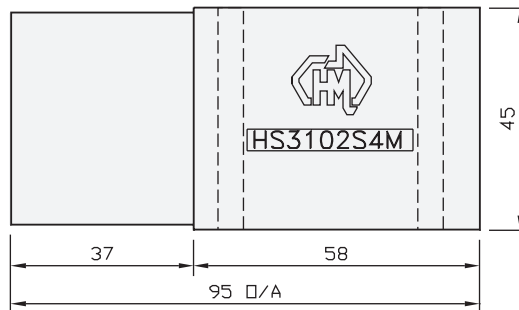
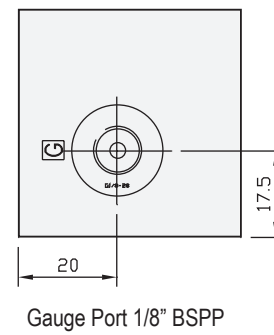
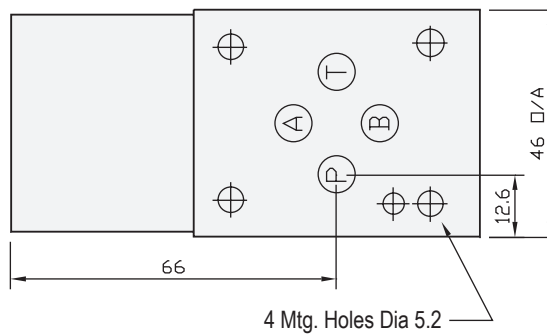
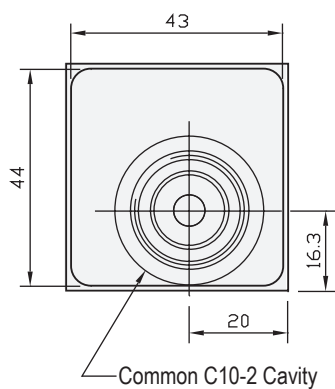
**Material :** Alloy 6061-T6 Steel - S1214  
**Max. Working Pressure :** Alloy - 210 Bar Steel - 350 Bar  
**Surface Treatment :** Alloy - Nil Steel - Zinc Gold Passivation

### Included Components

**O-Rings :** 4 each N9-012  
**Locating Pin :** 1 each Dia. 4 mm x 10 mm



### Technical Details



**Manifold Circuit**

1 - 'P'-Port Meter Out Flow Control  
 2 - Needle Valve Meter In and Out 'P'-Port

Projection



Part Number	Nominal Mass Kg
HS3102S4H	1.2
HS3102S4M	0.5

Industry Std. C10-2 Cavity Form Suitable for the Following Valve Manufacturers :  
**Modular , Delta , Parker , Hydraforce , Compact & Sterling**

Please Ensure Valve Selection is Suitable for your Application  
 For More Information Contact H.M.A. Sales

**SOLD SEPARATELY IF REQUIRED**  
 COMMON RELIEF VALVE - RP100-ABN (Suits Alloy) - RP100-ACN (Suits Steel)