



HS3102S2* Rotational Sandwich Body - Cetop3 - Single C10-2 Cavity

P - T or T - P-Port Interrupt

H S 3 10 2 S 2 *

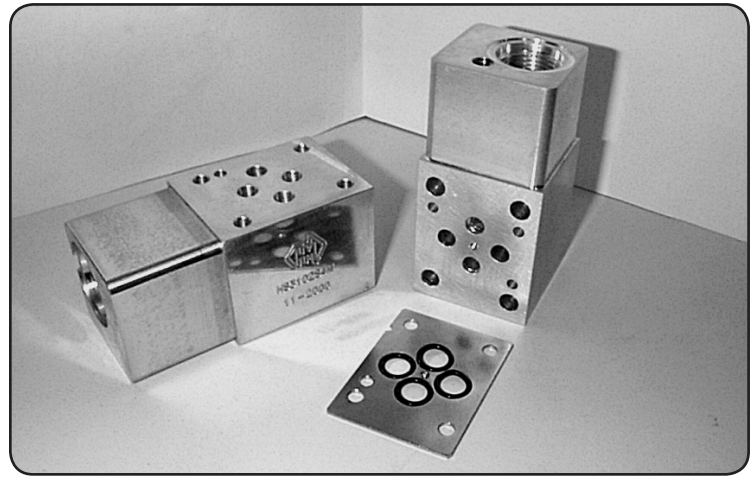
H Hydraulic Sandwich Cetop3
S Common C10-2 Cavity
3 Single Cavity
10 M = Alloy
2 H = Steel
S P - T or T - P-Port Interrupt
2 Refer to Circuit for Function

Specifications

Material :	Alloy 6061-T6	Steel - S1214
Max. Working Pressure :	Alloy - 210 Bar	Steel - 350 Bar
Surface Treatment :	Alloy - Nil	Steel - Zinc Gold Passivation

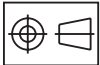
Included Components

O-Ring Plate :	1 each HSC30P1H
O-Rings :	4 each N9-012
Locating Pin :	1 each Dia. 4 mm x 10 mm



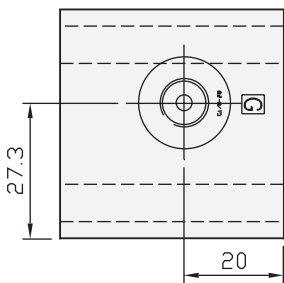
Technical Details

Projection

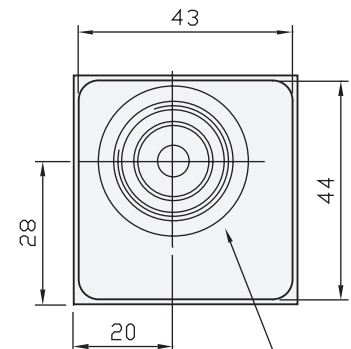
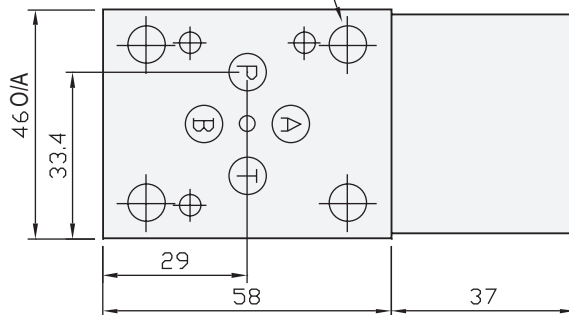


Refer to Circuit Example 2

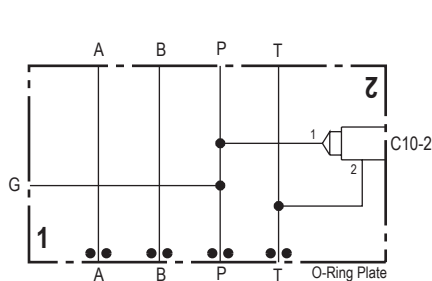
4 Mtg. Holes Dia 5.2



Gauge Port 1/8" BSPP

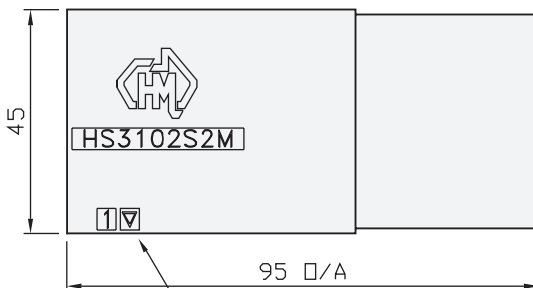


Common C10-2 Cavity

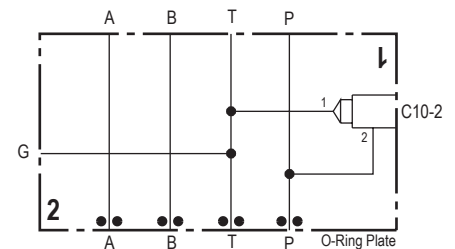


Circuit Option , Example 1

- 1 - N.C. Solenoid Valve 'P' to 'T'-Port
- 2 - N.O. Solenoid Valve 'P' to 'T'-Port
- 3 - Relief Valve 'P' to 'T'-Port
- 4 - Flow Control 'P' to 'T'-Port



Refer to Circuit Example 1



Circuit Option , Example 2

- 1 - N.C. Solenoid Valve 'T' to 'P'-Port
- 2 - N.O. Solenoid Valve 'T' to 'P'-Port
- 3 - Flow Control 'T' to 'P'-Port

Part Number	Nominal Mass Kg
-------------	-----------------

HS3102S2H	1.5
HS3102S2M	0.5

HSC30P1H - O-Ring Plates
Also Available Separately

Industry Std. C10-2 Cavity Form Suitable for the Following Valve Manufacturers :
Modular , Delta , Parker , Hydraforce , Compact & Sterling

Please Ensure Valve Selection is Suitable for your Application
For More Information Contact H.M.A. Sales

SOLD SEPARATELY IF REQUIRED
COMMON RELIEF VALVE - RP100-ABN (Suits Alloy) - RP100-ACN (Suits Steel)