



# HS3102S1\* Rotational Sandwich Body - Cetop3 - Single C10-2 Cavity

## A-T Port or B-T Port

**H S 3 10 2 S 1 \***

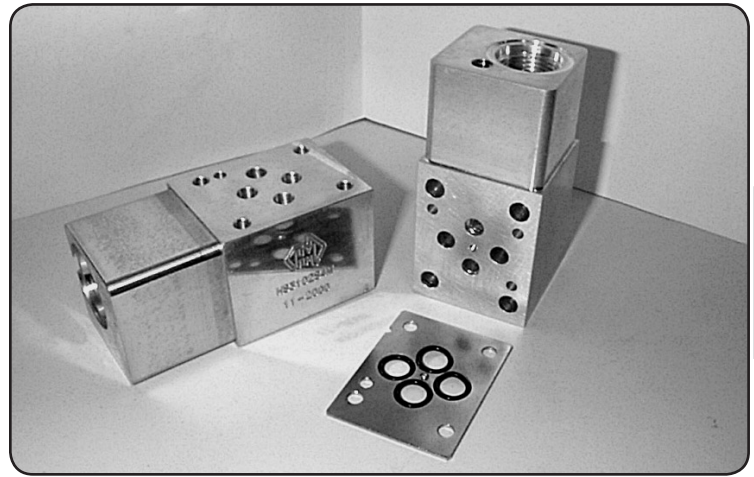
H = Alloy  
 S = Steel  
 3 = Hydraulic Sandwich Cetop3  
 10 = Common C10-2 Cavity  
 2 = Single Cavity  
 S = 'A' or 'B'-Port interrupt  
 1 = Function Example Refer to Circuit Options  
 \* =

### Specifications

**Material :** Alloy 6061-T6 Steel - S1214  
**Max. Working Pressure :** Alloy - 210 Bar Steel - 350 Bar  
**Surface Treatment :** Alloy - Nil Steel - Zinc Gold Passivation

### Included Components

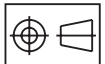
**O-Ring Plate :** 1 each **HSC30P1H**  
**O-Rings :** 4 each **N9-012**  
**Locating Pin :** 1 each Dia. 4 mm x 10 mm



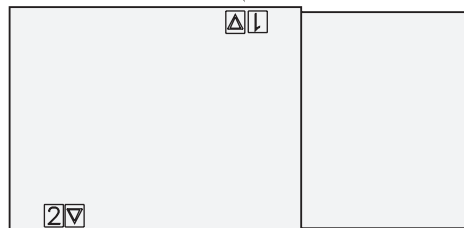
CETOP 3

### Technical Details

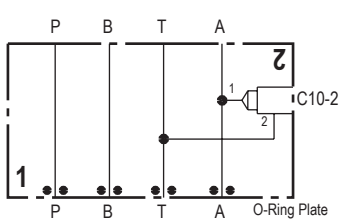
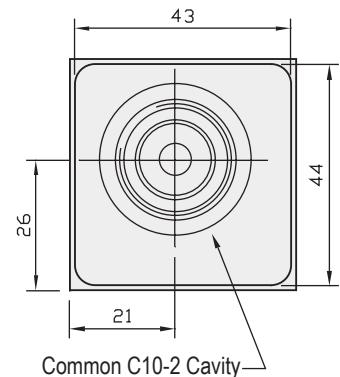
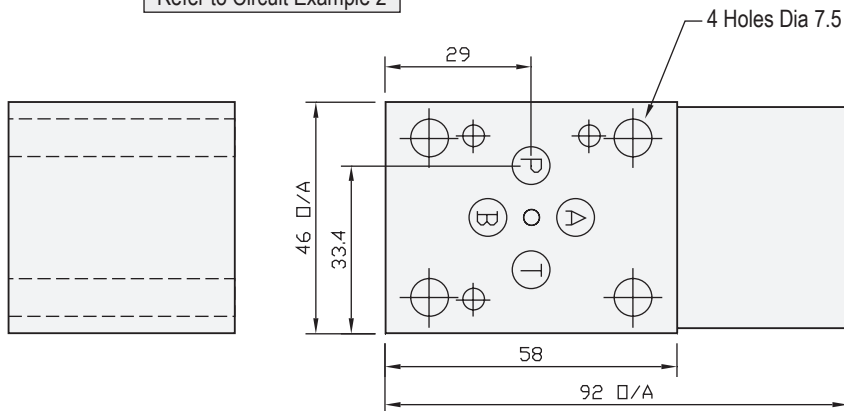
Projection



Refer to Circuit Example 1

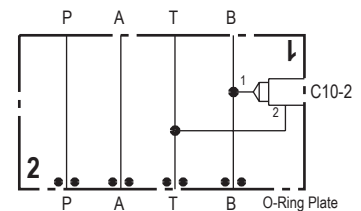
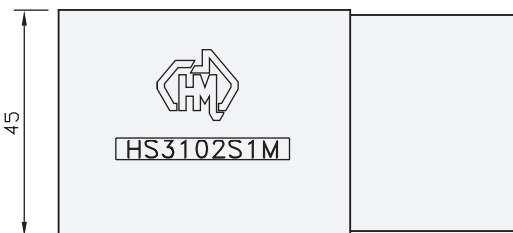


Refer to Circuit Example 2



**Circuit Option , Example 1**

- 1 - Solenoid Dump Valve 'A'-Port to Tank
- 2 - 'A'-Port Flow Control Bleed Off to Tank
- 3 - 'A'-Port Relief to Tank



**Circuit Option - Example 2**

- 1 - Solenoid Dump Valve 'B'-Port to Tank
- 2 - 'B'-Port Flow Control Bleed Off to Tank
- 3 - 'B'-Port Relief to Tank

Part Number	Nominal Mass Kg
HS3102S1H	1.5
HS3102S1M	0.5

**HSC30P1H** - O-Ring Plates  
Also Available Separately

Industry Std. C10-2 Cavity Form Suitable for the Following Valve Manufacturers :  
**Modular , Delta , Parker , Hydraforce , Compact & Sterling**

Please Ensure Valve Selection is Suitable for your Application  
For More Information Contact H.M.A. Sales

**SOLD SEPARATELY IF REQUIRED**  
**COMMON RELIEF VALVE - RP100-ABN** (Suits Alloy) -- **RP100-ACN** (Suits Steel)