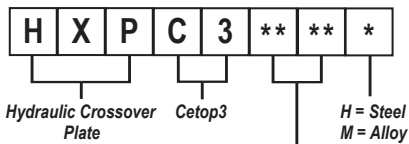




HXPC3***

Crossover Plate - Cetop3



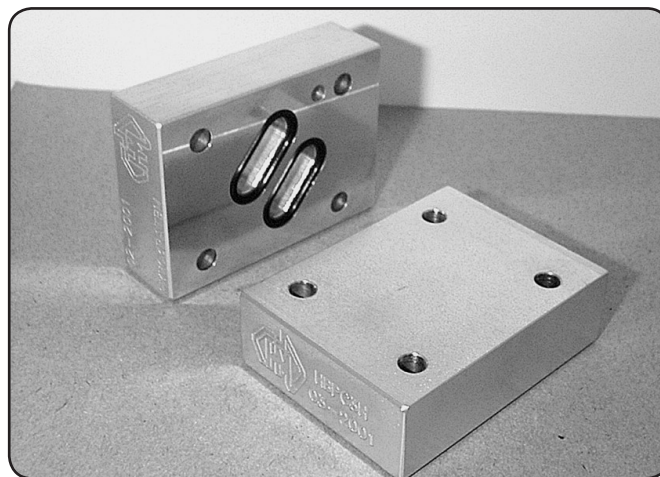
Function Descriptions - Refer to Circuits Shown

Specifications

Material : H = Steel - S1214
Max. Working Pressure : Steel - 350 Bar
Surface Treatment : Steel - Zinc Gold Passivation

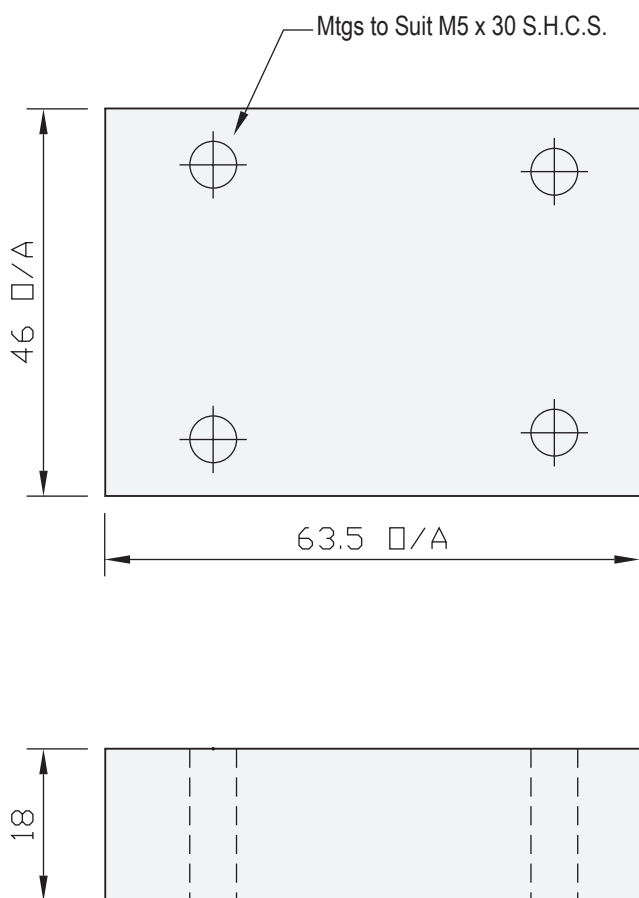
Included Components

Socket Head Cap Screws: 4 each M5 x 25
O-Rings : HXPC3PT, HXPC3AB 4 each N9-012
 HXPC3PATB, HXPC3PBTA 2 each N9-016
 HXPC3PA, PB, TA, TB 1 each N9-016, 2 each N9-012

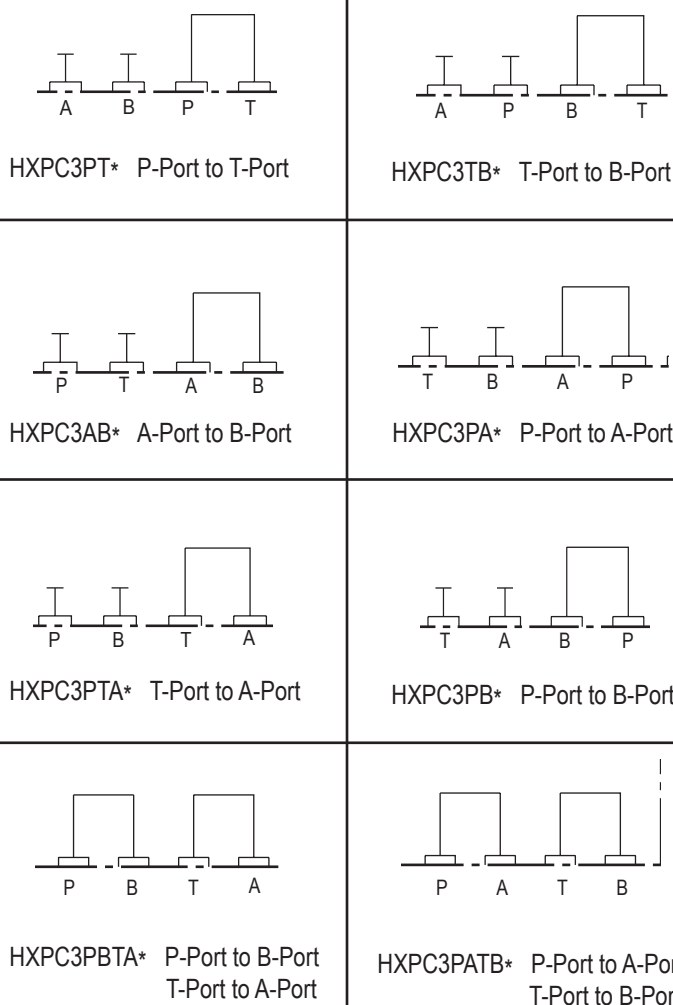


CETOP 3

Technical Details



Manifold Circuits



Steel

Part Number	Nominal Mass Kg
HXPC3PTH	0.4
HXPC3ABH	0.4
HXPC3PAH	0.4
HXPC3PBH	0.4
HXPC3TAH	0.4
HXPC3TBH	0.4
HXPC3PATBH	0.4
HXPC3PBTAH	0.4

Alloy - Made to Order

Part Number	Nominal Mass Kg
HXPC3PTM	0.2
HXPC3ABM	0.2
HXPC3PAM	0.2
HXPC3PBM	0.2
HXPC3TAM	0.2
HXPC3TBM	0.2
HXPC3PATBM	0.2
HXPC3PBTA M	0.2