

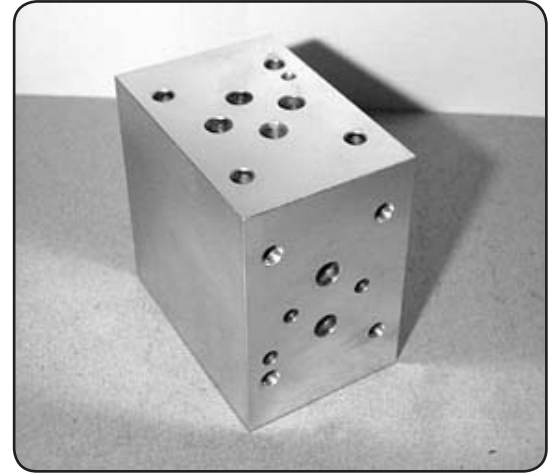


HFSC3**H** Flow Control Sandwich - Cetop3 - Steel

H F S C 3 * * H A J

Hydraulic Flow Control Sandwich Cetop3 H = Steel AJ = Anti-Jump Feature Omit if not required

Function Descriptions
Refer to Circuits for Model Selection



CETOP 3

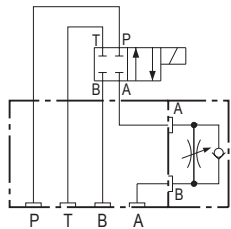
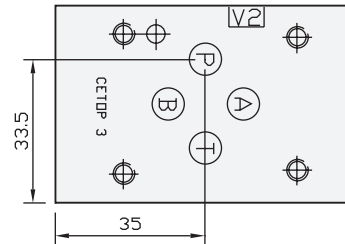
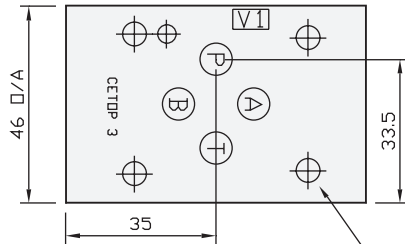
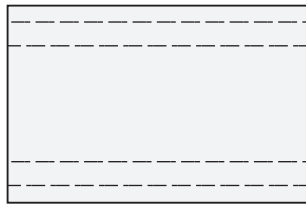
Specifications

Material : H = Steel - S1214
Max. Working Pressure : Steel - 350 Bar
Surface Treatment : Steel - Zinc Gold Passivation

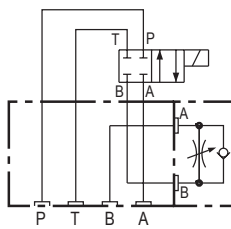
Included Components

O-Rings : 4 each N9-012

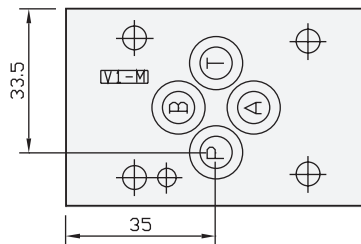
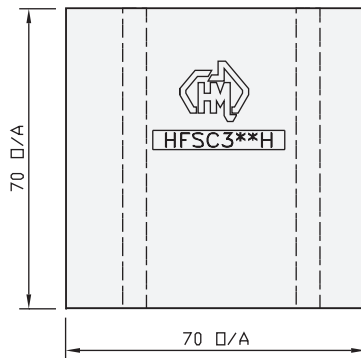
Technical Details



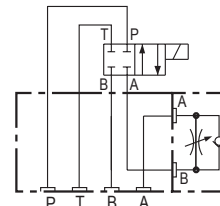
HFSC3AAH



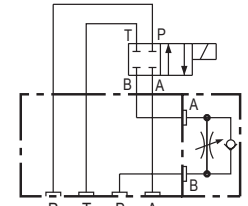
HFSC3BBH



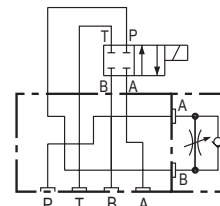
Valve Interface Mtg Threads M5



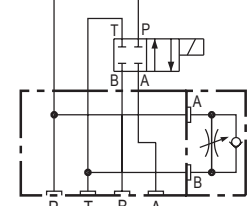
HFSC3ABH



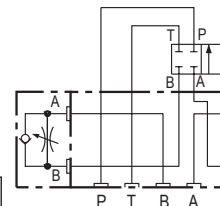
HFSC3BAH



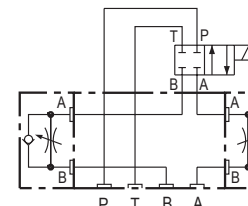
HFSC3PBH



HFSC3PTH



HFSC3DBH



HFSC3DAH

Projection



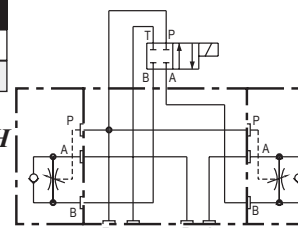
Flow Control Sandwich

Part Number	Nominal Mass Kg
HFSC3AAH	1.6
HFSC3ABH	1.6
HFSC3BAH	1.6
HFSC3BBH	1.6
HFSC3PBH	1.6
HFSC3PTH	1.6
HFSC3DAH	1.6
HFSC3DBH	1.6

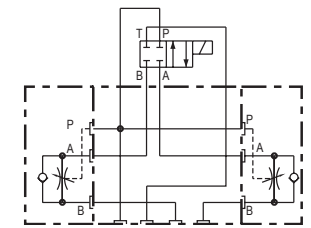
Flow Control Sandwich With Anti-Jump Feature

Part Number	Nominal Mass Kg
HFSC3DAHAJ	3.0
HFSC3DBHAJ	3.0

NOT SUITABLE FOR REXROTH RECTIFIER PLATE



HFSC3DBHAJ



HFSC3DAHAJ