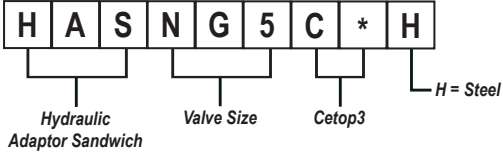




HASNG5C3H * Adaptor Sandwich - NG5 - Rexroth to Cetop3



2 PART MANIFOLD

CETOP 3

Specifications

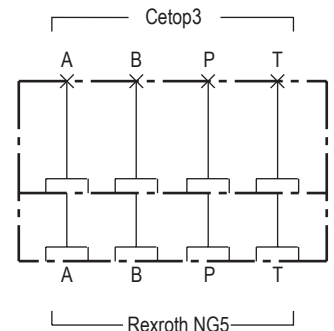
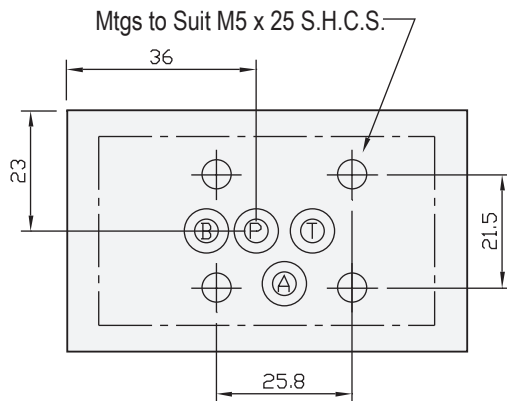
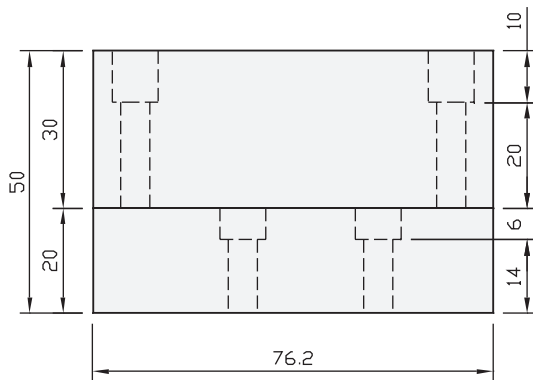
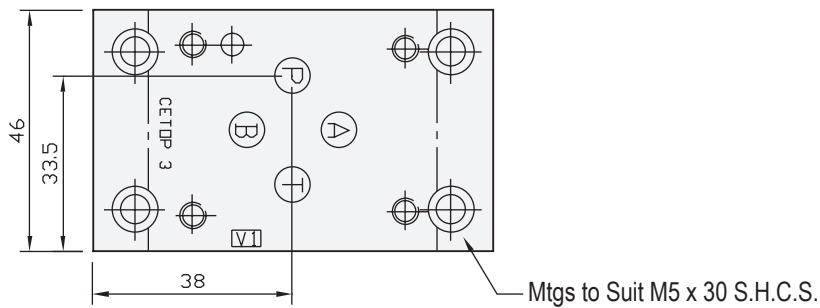
Material : H = Steel - S1214
Max. Working Pressure : Steel - 350 Bar
Surface Treatment : Steel - Zinc Gold Passivation

Included Components

Socket Head Cap Screws : (Component A) 4 each M5 x 30
Socket Head Cap Screws : (Component B) 4 each M5 x 25
O-Rings : (Component A) N9-009
O-Rings : (Component B) N9-009

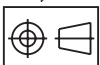
Technical Details

Valve Interface Mtg Threads M5



Manifold Circuit

Projection



Part Number	Nominal Mass Kg
HASNG5C3H	1.2