



# HMC3P \* B G \* \* Manifold - Cetop3 - Parallel - Bottom Work Ports BSPP

**H M C 3 P \* B G \* \***

Hydraulic Manifold

Cetop3

Parallel

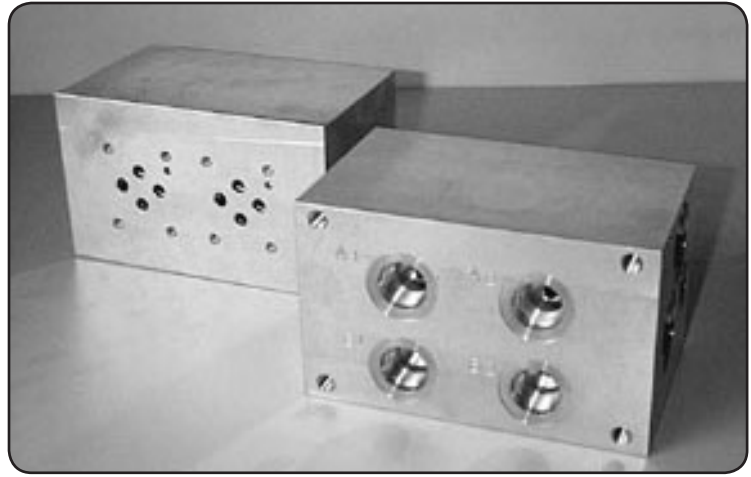
Bottom Entry

H = Steel  
M = Alloy

S = Sun Relief Cavity T10-A  
C = Common Relief Cavity C10-2  
Omit If Relief Not Required

No. of Stations

BSPP Ports



CETOP 3

## Specifications

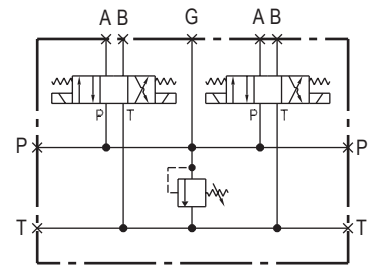
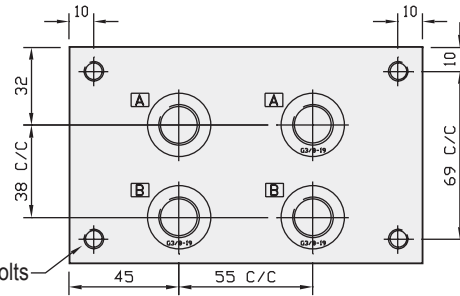
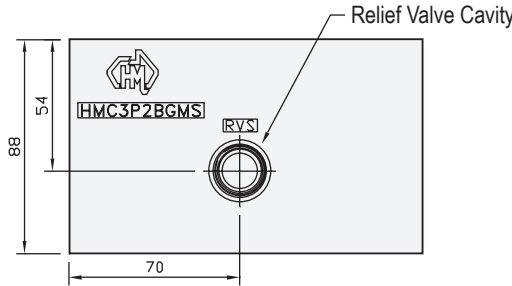
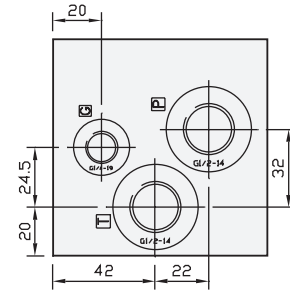
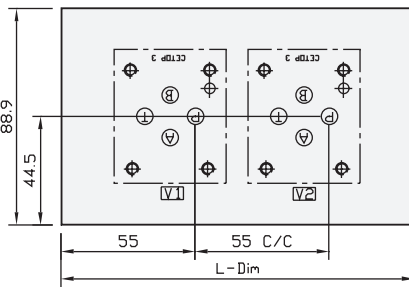
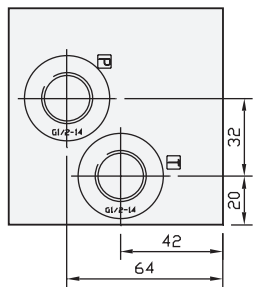
**Material :** M = Alloy 6061-T6 H = Steel - S1214  
**Max. Working Pressure :** Alloy - 210 Bar Steel - 350 Bar  
**Surface Treatment :** Alloy - Nil Steel - Zinc Gold Passivation  
**Port Sizes :** P & T - 1/2" BSPP A & B - 3/8" BSPP G - 1/4" BSPP

## Included Components

**Hex. Head Cap Screws :** 4 each M8 x 20  
**Flat Washers :** 4 each M8

## Technical Details

Valve Interface Mtg Threads M5



Manifold Circuit (Shown With Relief Option)



### Manifold - Without Relief Cavity

Steel

Alloy

Part Number	L Dim	Nominal Mass Kg
HMC3P1BGH	90	6.0
HMC3P2BGH	145	9.0
HMC3P3BGH	200	12.5
HMC3P4BGH	255	16.0
HMC3P5BGH	310	19.5
HMC3P6BGH	365	23.0
HMC3P7BGH	420	26.5
HMC3P8BGH	475	30.0

Part Number	L Dim	Nominal Mass Kg
HMC3P1BGM	90	2.0
HMC3P2BGM	145	3.3
HMC3P3BGM	200	4.5
HMC3P4BGM	245	5.3
HMC3P5BGM	310	6.5
HMC3P6BGM	365	8.0
HMC3P7BGM	420	9.2
HMC3P8BGM	475	10.5

### Manifold - With Relief Cavity

Steel

Alloy

Part Number
HMC3P1BGH * S or C
HMC3P2BGH * S or C
HMC3P3BGH * S or C
HMC3P4BGH * S or C
HMC3P5BGH * S or C
HMC3P6BGH * S or C
HMC3P7BGH * S or C
HMC3P8BGH * S or C

Part Number
HMC3P1BGM * S or C
HMC3P2BGM * S or C
HMC3P3BGM * S or C
HMC3P4BGM * S or C
HMC3P5BGM * S or C
HMC3P6BGM * S or C
HMC3P7BGM * S or C
HMC3P8BGM * S or C

All Bottom Ported Manifolds Made To Order

RELIEF VALVES SOLD SEPARATELY

SUN RELIEF VALVE RPEC-LAN (Suits Alloy)  
 SUN RELIEF VALVE RPEC-LCN (Suits Steel)  
 COMMON RELIEF VALVE RP100-ABN (Suits Alloy)  
 COMMON RELIEF VALVE RP100-ACN (Suits Steel)