

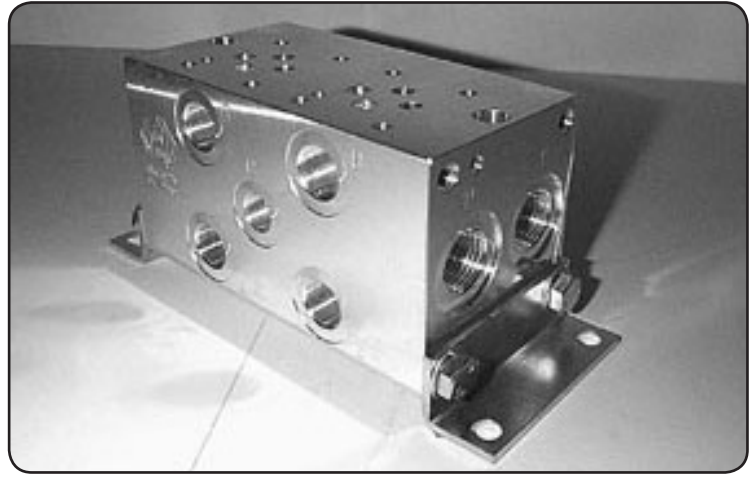
HMC3P*U**

Manifold - Cetop3 - Parallel - UNF Ports



H M C 3 P * U * *

H Hydraulic Manifold
M Cetop3
C Parallel
3 No. of Stations
P UNF Ports
***** H = Steel
U M = Alloy
***** S = Sun Relief Cavity T10-A
***** C = Common Relief Cavity C10-2
 Omit If Relief Not Required



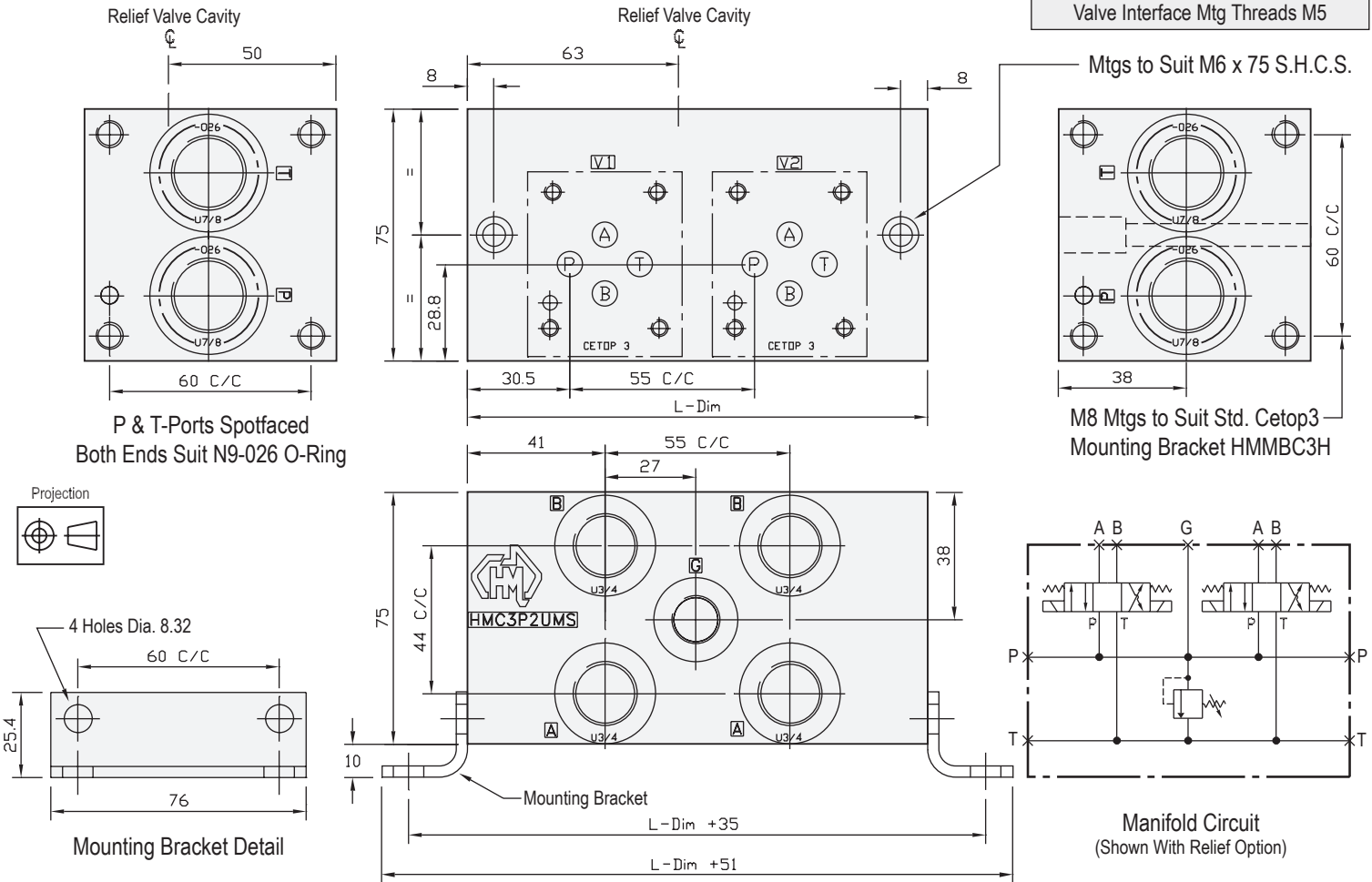
Specifications

Material : Alloy 6061-T6 Steel - S1214
Max. Working Pressure : Alloy - 210 Bar Steel - 350 Bar
Surface Treatment : Alloy - Nil Steel - Zinc Gold Passivation
Port Sizes : P & T - 7/8" UNF A & B - 3/4" UNF G - 1/4" UNF

Included Components

Mounting Brackets : 2 each HMMBC3H
Hex. Head Set Screws : 8 each M8 x 16
Flat Washers : 8 each M8
O-Rings : (For Module Mtg) 2 each N9-026

Technical Details



Manifold - Without Relief Cavity

Steel			Alloy		
Part Number	L Dim	Nominal Mass Kg	Part Number	L Dim	Nominal Mass Kg
HMC3P1UH	90	3.8	HMC3P1UM	90	1.6
HMC3P2UH	137	4.8	HMC3P2UM	137	2.2
HMC3P3UH	192	6.5	HMC3P3UM	192	2.9
HMC3P4UH	247	8.3	HMC3P4UM	247	3.7
HMC3P5UH	302	10.2	HMC3P5UM	302	4.5
HMC3P6UH	357	12.0	HMC3P6UM	357	5.3
HMC3P7UH	412	13.8	HMC3P7UM	412	6.0
HMC3P8UH	467	15.5	HMC3P8UM	467	6.8

Manifold - With Relief Cavity

Steel		Alloy	
Part Number	Part Number	Part Number	Part Number
HMC3P1UH * S or C	HMC3P1UM * S or C	HMC3P1UH * S or C	HMC3P1UM * S or C
HMC3P2UH * S or C	HMC3P2UM * S or C	HMC3P2UH * S or C	HMC3P2UM * S or C
HMC3P3UH * S or C	HMC3P3UM * S or C	HMC3P3UH * S or C	HMC3P3UM * S or C
HMC3P4UH * S or C	HMC3P4UM * S or C	HMC3P4UH * S or C	HMC3P4UM * S or C
HMC3P5UH * S or C	HMC3P5UM * S or C	HMC3P5UH * S or C	HMC3P5UM * S or C
HMC3P6UH * S or C	HMC3P6UM * S or C	HMC3P6UH * S or C	HMC3P6UM * S or C
HMC3P7UH * S or C	HMC3P7UM * S or C	HMC3P7UH * S or C	HMC3P7UM * S or C
HMC3P8UH * S or C	HMC3P8UM * S or C	HMC3P8UH * S or C	HMC3P8UM * S or C

Multiple Relief Cavities - Optional
 3 Station and Above Can be Manufactured on Request
 1 & 2 Stations - Cavity Module Sold Separately HMC3H*

UNF PORTED MANIFOLDS MADE TO ORDER

RELIEF VALVES SOLD SEPARATELY

SUN RELIEF VALVE RPEC-LAN (Suits Alloy)
SUN RELIEF VALVE RPEC-LCN (Suits Steel)
COMMON RELIEF VALVE RP100-ABN (Suits Alloy)
COMMON RELIEF VALVE RP100-ACN (Suits Steel)