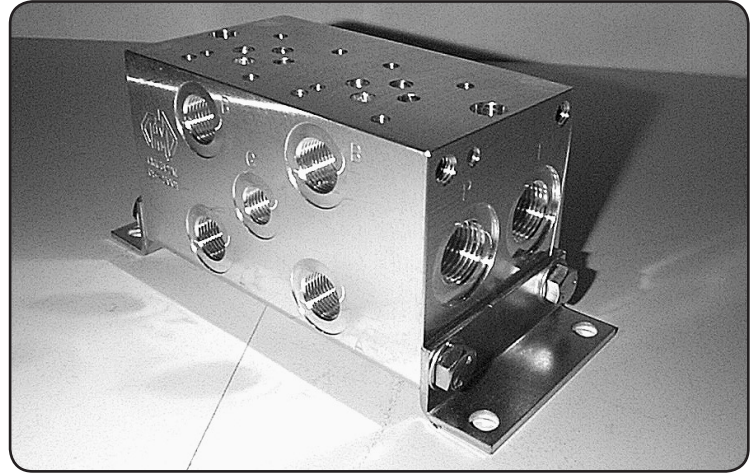
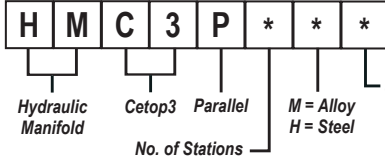




# HMC3P\*\*\*

# Manifold - Cetop3 - Parallel



CETOP 3

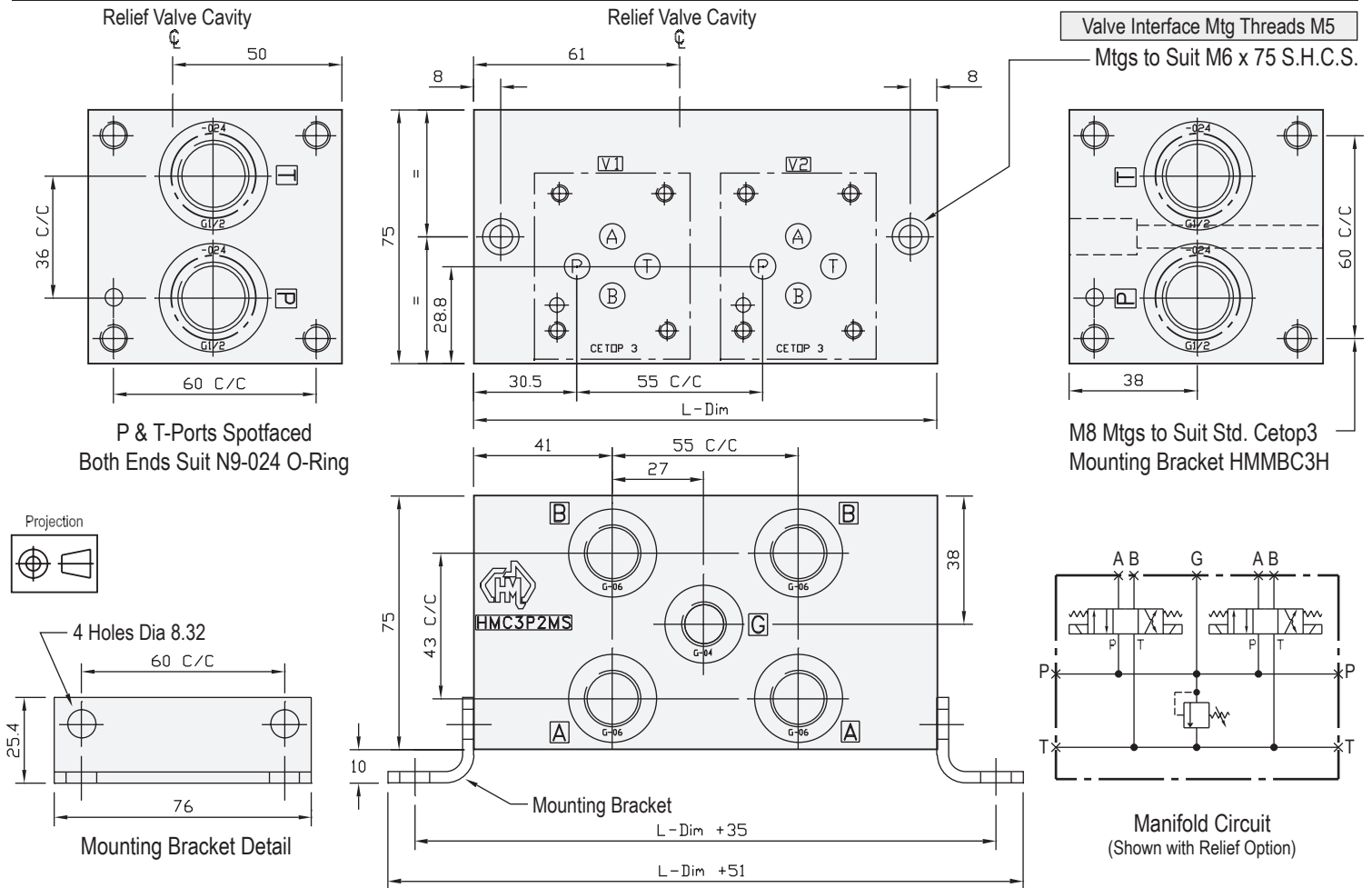
### Specifications

Material :	Alloy 6061-T6	Steel - S1214
Max. Working Pressure :	Alloy - 210 Bar	Steel - 350 Bar
Surface Treatment :	Alloy - Nil	Steel - Zinc Gold Passivation
Port Sizes :	P & T - 1/2" BSPP	A & B - 3/8" BSPP G - 1/4" BSPP

### Included Components

Mounting Brackets :	2 each HMMBC3H
Hex. Head Set Screws :	8 each M8 x 16
Socket Head Cap Screws :	2 each M6 x 75 (Inc. 2 x M6 Nuts)
Flat Washers :	8 each M8
O-Rings : (For Module Mtg)	2 each N9-024

### Technical Details



### Manifold - Without Relief Cavity

Part Number	L Dim	Nominal Mass Kg
HMC3P1H	90	3.8
HMC3P2H	137	4.8
HMC3P3H	192	6.5
HMC3P4H	247	8.3
HMC3P5H	302	10.2
HMC3P6H	357	12.0
HMC3P7H	412	13.8
HMC3P8H	467	15.5

### Alloy

Part Number	L Dim	Nominal Mass Kg
HMC3P1M	90	1.6
HMC3P2M	137	2.2
HMC3P3M	192	2.9
HMC3P4M	247	3.7
HMC3P5M	302	4.5
HMC3P6M	357	5.3
HMC3P7M	412	6.0
HMC3P8M	467	6.8

### Manifold - With Relief Cavity

### Steel

Part Number
HMC3P1H * S or C
HMC3P2H * S or C
HMC3P3H * S or C
HMC3P4H * S or C
HMC3P5H * S or C
HMC3P6H * S or C
HMC3P7H * S or C
HMC3P8H * S or C

### Alloy

Part Number
HMC3P1M * S or C
HMC3P2M * S or C
HMC3P3M * S or C
HMC3P4M * S or C
HMC3P5M * S or C
HMC3P6M * S or C
HMC3P7M * S or C
HMC3P8M * S or C

#### Multiple Relief Cavities - Optional

3 Station and Above Can be Manufactured on Request  
1 & 2 Stations - Cavity Module Sold Separately HMC3H\*

#### 7 & 8 STATION MANIFOLDS MADE TO ORDER

RELIEF VALVES SOLD SEPARATELY

SUN RELIEF VALVE	RPEC-LAN	(Suits Alloy)
SUN RELIEF VALVE	RPEC-LCN	(Suits Steel)
COMMON RELIEF VALVE	RP100-ABN	(Suits Alloy)
COMMON RELIEF VALVE	RP100-ACN	(Suits Steel)