

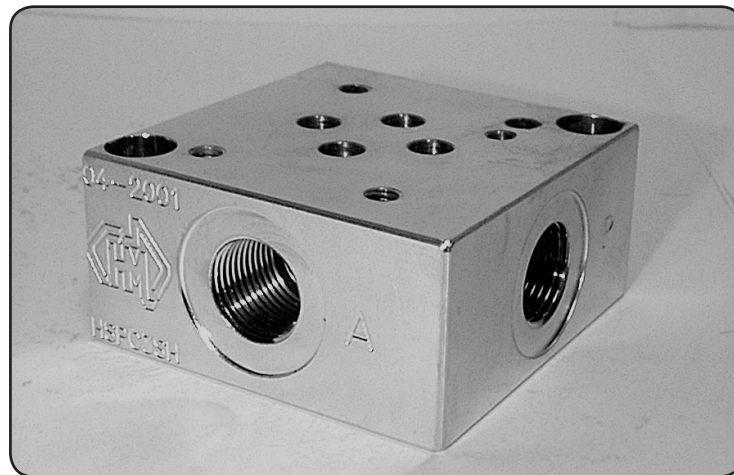
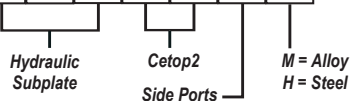


HSPC2S *

Subplate - Cetop2 - Side Ports

CETOP 2

H S P C 2 S *



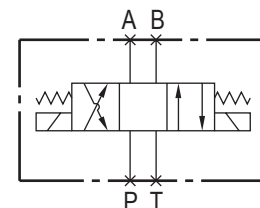
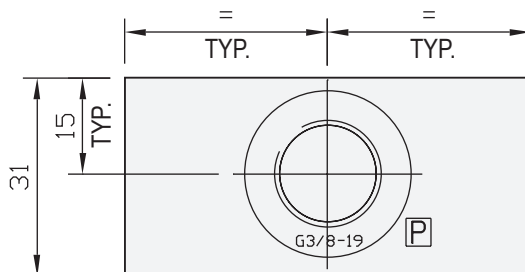
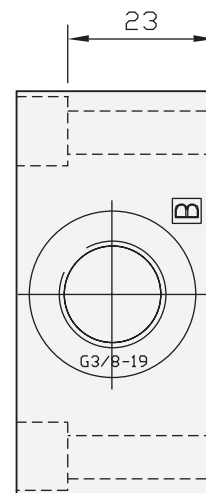
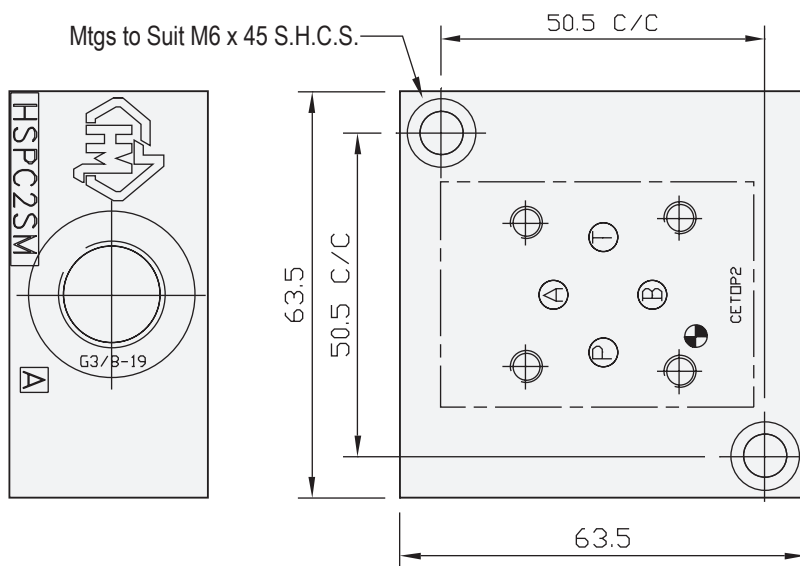
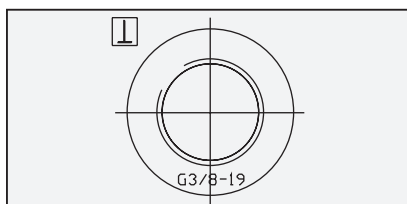
Specifications

Material :	Alloy 6061-T6	Steel - S1214
Max. Working Pressure :	Alloy - 210 Bar	Steel - 350 Bar
Surface Treatment :	Alloy - Nil	Steel - Zinc Gold Passivation
Port Sizes :	P & T - 3/8" BSPP	A & B - 3/8" BSPP

Included Components

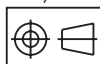
Socket Head Cap Screws :	(Inc. 2 x M6 Nuts) 2 each M6 x 45
Flat Washers :	2 each M6

Technical Details



Manifold Circuit

Projection



Part Number	Nominal Mass Kg
HSPC2SH	0.70
HSPC2SM	0.25