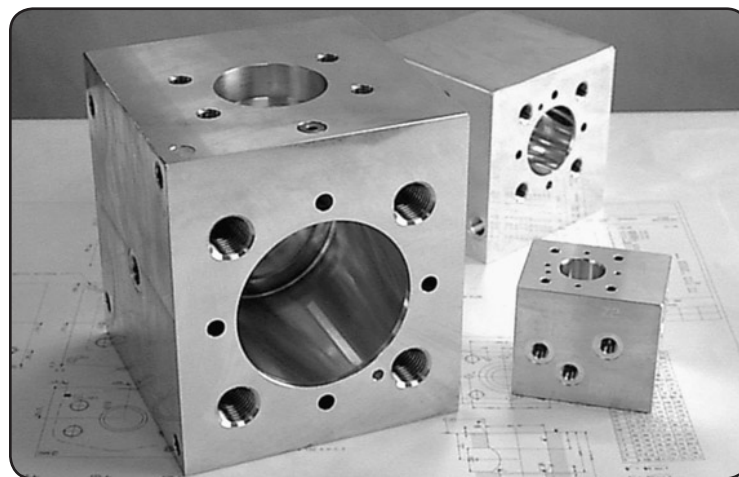




# HLH\*\*F61\* Logic Housing - Din24342 - Code 61 - Flange Ports

**H L H \* \* F 6 1 \***



### Specifications

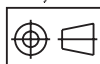
Material :	Alloy - 6061 T6	Steel - S1214
Max. Working Pressure :	Alloy - 210 Bar	Steel - 350 Bar
Surface Treatment :	Alloy - Nil	Steel - Zinc Gold Passivation

### Included Components

Orifice Plugs 0.4mm :	4 each 1/16" NPT
Option Plugs :	2 each 1/16" NPT

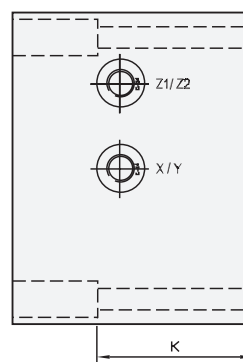
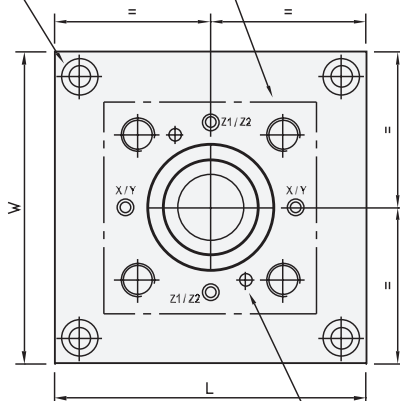
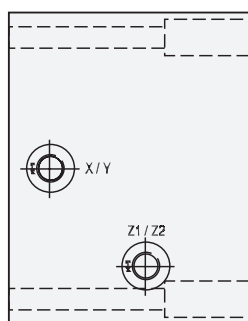
### Technical Details

Projection



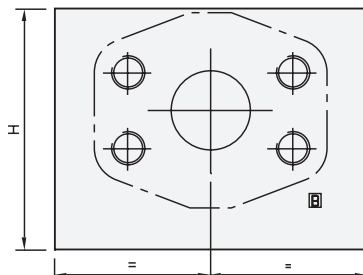
LIFT POINT SIZE 32 - 63

NG DIN 24342



ROTATION OF VALVE ENABLES USE OF OPTIONAL CIRCUITS AS SHOWN

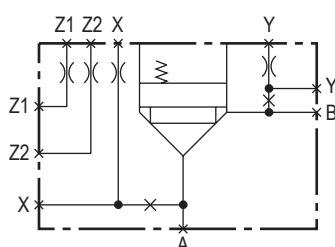
DOWEL LOCATIONS PERMIT VALVE ROTATION



Part Number	A & B Ports	X & Y Ports	Z1 & Z2 Ports
HLH16F61*	1" SAE	1/4"BSPP	1/4"BSPP
HLH25F61*	1-1/4" SAE	3/8"BSPP	3/8"BSPP
HLH32F61*	1-1/2" SAE	3/8"BSPP	3/8"BSPP
HLH40F61*	2" SAE	3/8"BSPP	3/8"BSPP
HLH50F61*	2-1/2" SAE	3/8"BSPP	3/8"BSPP
HLH63F61*	3" SAE	3/8"BSPP	3/8"BSPP

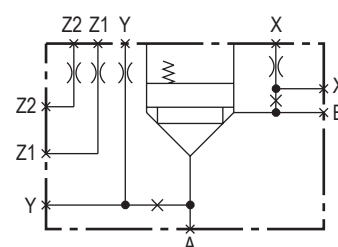
L Dim	C/C Dim	W Dim	H Dim	K Dim	Flange Mtg Thread	D Dia
105	85	98	76	60	3/8" UNC x 19	10.32
126	100	126	98	65	7/16" UNC x 20	10.32
150	126	150	116	75	1/2" UNC x 24	10.32
196	166	196	136	75	1/2" UNC x 26	10.32
210	180	210	156	100	1/2" UNC x 26	10.32
250	220	280	196	100	5/8" UNC x 32	10.32

### CIRCUIT OPTION 1

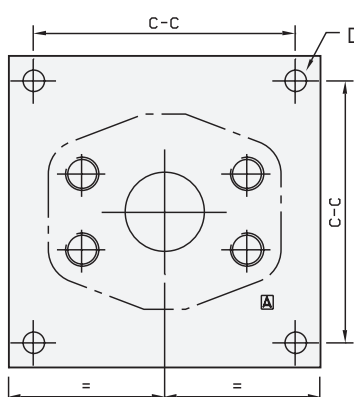


⌘ ORIFICE PLUG  
× OPTION PLUG

### CIRCUIT OPTION 2



⌘ ORIFICE PLUG  
× OPTION PLUG



Alloy

Part Number	Nominal Mass
HLH16F61M	1.5
HLH25F61M	3.5
HLH32F61M	7.3
HLH40F61M	9.5
HLH50F61M	10.5
HLH63F61M	20.0

FLANGE PORTS HAVE IMPERIAL MTGS  
METRIC FLANGE MTGS ARE OPTIONAL  
PLEASE STATE AT POINT OF ORDER

NG50 & NG63 LOGIC HOUSINGS MADE TO ORDER

Steel

Part Number	Nominal Mass
HLH16F61H	7.0
HLH25F61H	12.0
HLH32F61H	20.0
HLH40F61H	40.0
HLH50F61H	52.0
HLH63F61H	92.0