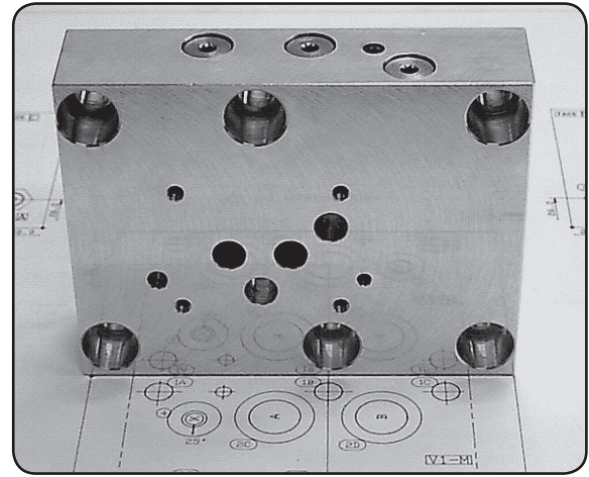
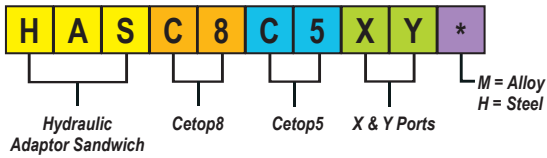


HASC8C5XY* ADAPTOR SANDWICH

Cetop8 to Cetop5 - X & Y - Ports

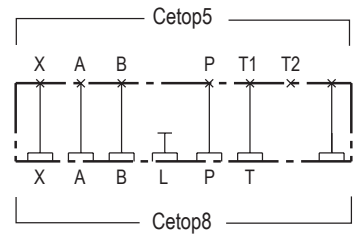
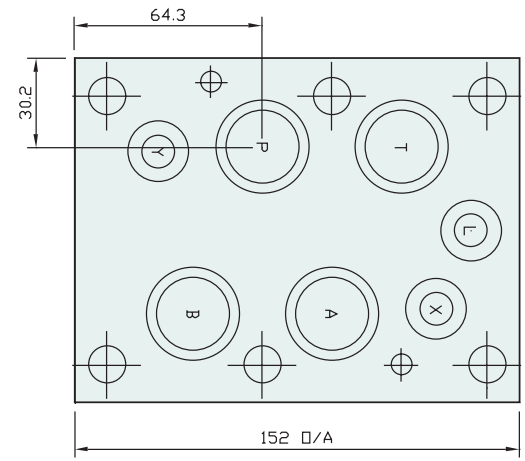
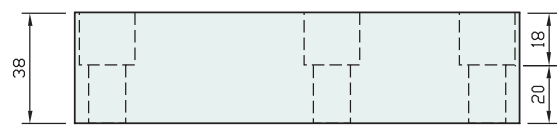
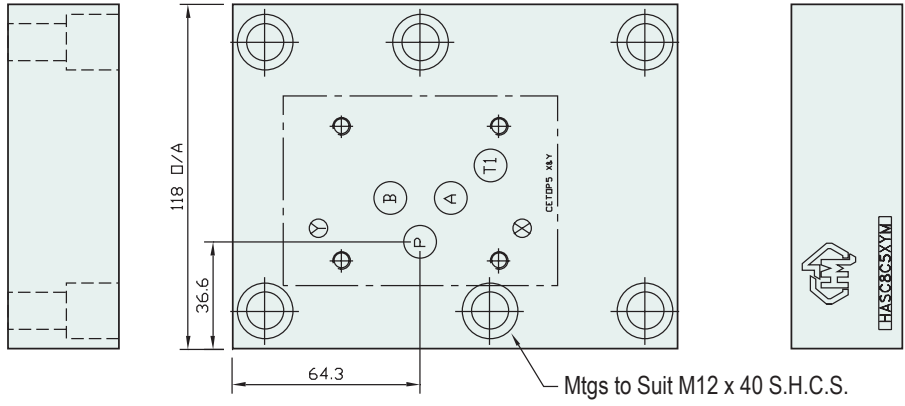


CETOP8

| Specifications | | |
|-------------------------|-----------------|-------------------------------|
| Material : | Alloy 6061-T6 | Steel - S1214 |
| Max. Working Pressure : | Alloy - 210 Bar | Steel - 350 Bar |
| Surface Treatment : | Alloy - Nil | Steel - Zinc Gold Passivation |

| Included Components | |
|--------------------------|-------------------------------|
| Socket Head Cap Screws : | 4 each M12 x 40 |
| O-Rings : | 4 each N9-121 , 3 each N9-114 |

Technical Details



Manifold Circuit



| Part Number | Nominal Mass Kg |
|-------------|-----------------|
| HASC8C5XYH | 7.0 |
| HASC8C5XYM | 2.0 |