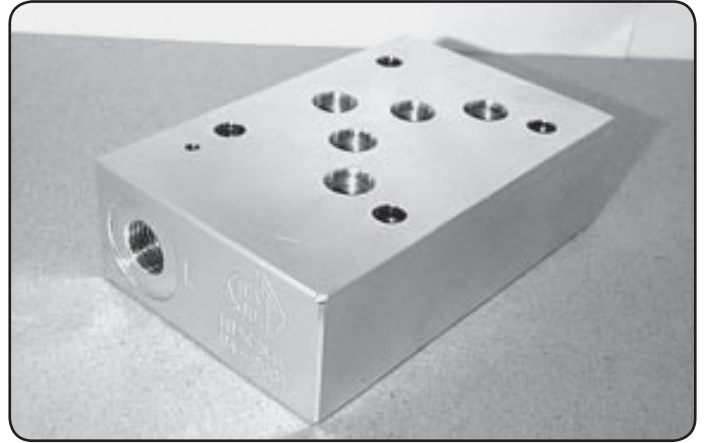


CETOP5



Hydraulic Tapping Sandwich
 Cetop5
 L - Port
 M = Alloy
 H = Steel



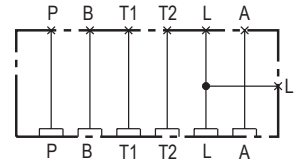
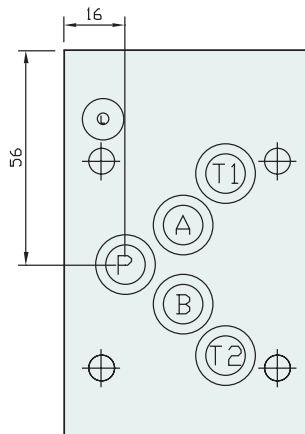
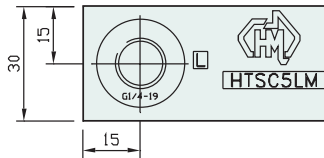
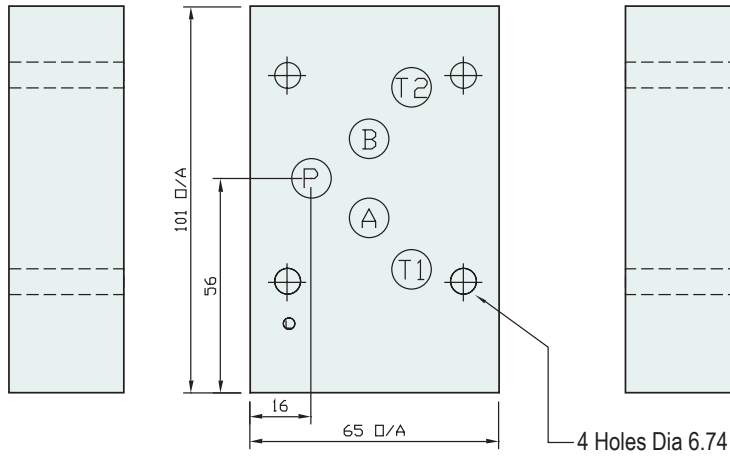
Specifications

| | | |
|-------------------------|-----------------|-------------------------------|
| Material : | Alloy 6061-T6 | Steel - S1214 |
| Max. Working Pressure : | Alloy - 210 Bar | Steel - 350 Bar |
| Surface Treatment : | Alloy - Nil | Steel - Zinc Gold Passivation |
| Port Sizes : | L - 1/4" BSPP | |

Included Components

O-Rings : 5 each N9-014 , 1 x N9-011

Technical Details



Manifold Circuit

Projection



| Part Number | Nominal Mass Kg |
|-------------|-----------------|
| HTSC5LH | 1.4 |
| HTSC5LM | 0.5 |

Made To Order