

CETOP3

A or B-Port Vented Counterbalance

H S 3 10 4 S 1 *

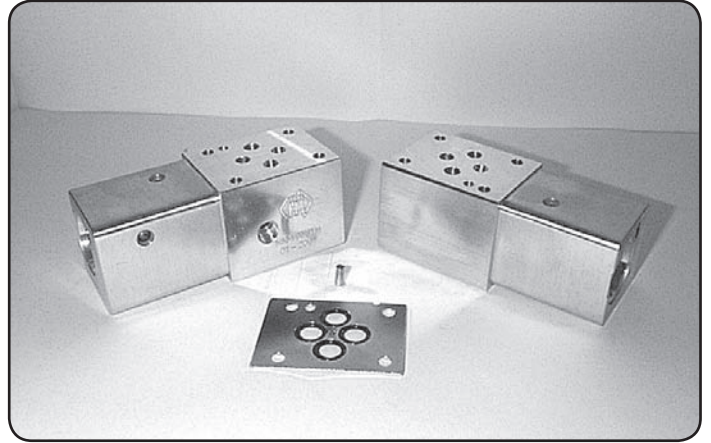
H Hydraulic Sandwich Cetop3
S C10-4 Cavity
3 Single Cavity
10 'A' or 'B'-Port Counterbalance
4 Function Example Refer to Circuit
S M = Alloy
 H = Steel
1

Specifications

Material : Alloy 6061-T6 Steel - S1214
Max. Working Pressure : Alloy - 210 Bar Steel - 350 Bar
Surface Treatment : Alloy - Nil Steel - Zinc Gold Passivation

Included Components

O-Ring Plate : 1 each HSC3OP1H
O-Rings : 4 each N9-012
Locating Pin : 1 each Dia. 4 mm x 10 mm

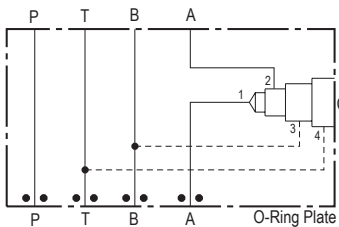
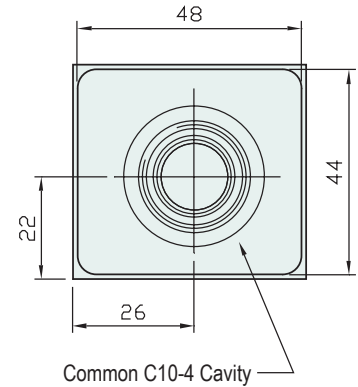
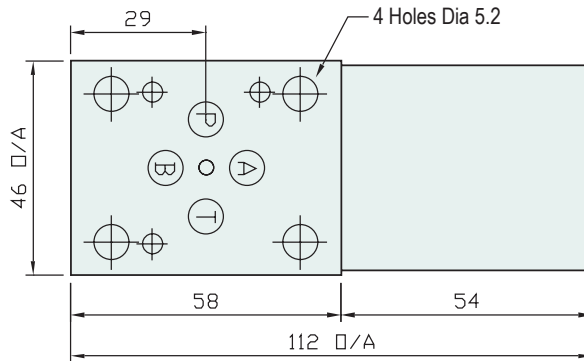
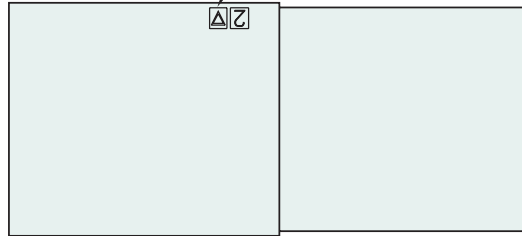


Technical Details

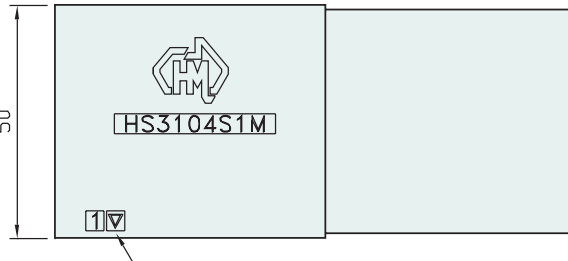
Projection



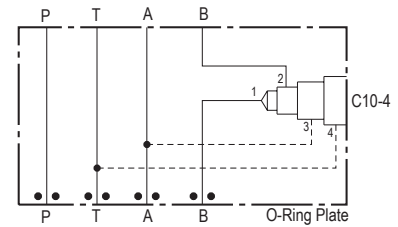
Refer to Circuit Example 2



Circuit Option , Example 1
1 - Vented Counterbalance 'A'-Port



Refer to Circuit Example 2



Circuit Option , Example 2
1 - Vented Counterbalance 'B'-Port

Part Number	Nominal Mass Kg
HS3104S1H	1.5
HS3104S1M	0.5

HS3104S1H 1.5

HS3104S1M 0.5

HSC3OP1H - O-Ring Plates
Also Available Separately

Industry Std. C10-4 Cavity Form Suitable for the Following Valve Manufacturers :
Modular , Parker , Hydraforce , Compact & Sterling

Please Ensure Valve Selection is Suitable for your Application
For More Information Contact H.M.A. Sales