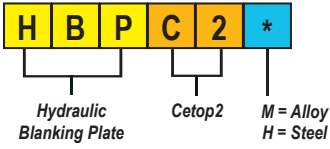


CETOP2

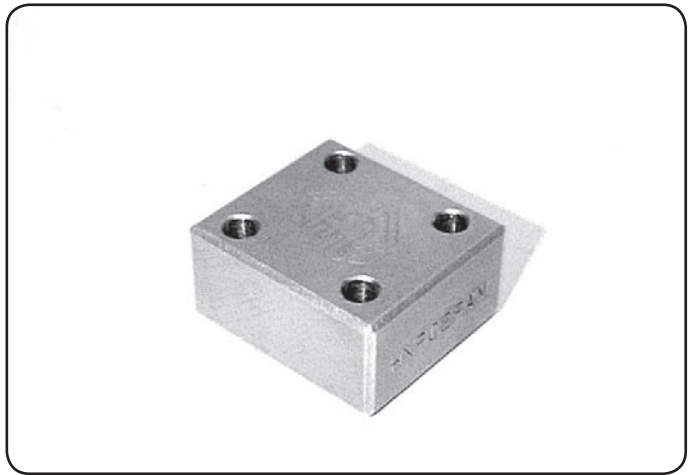


Specifications

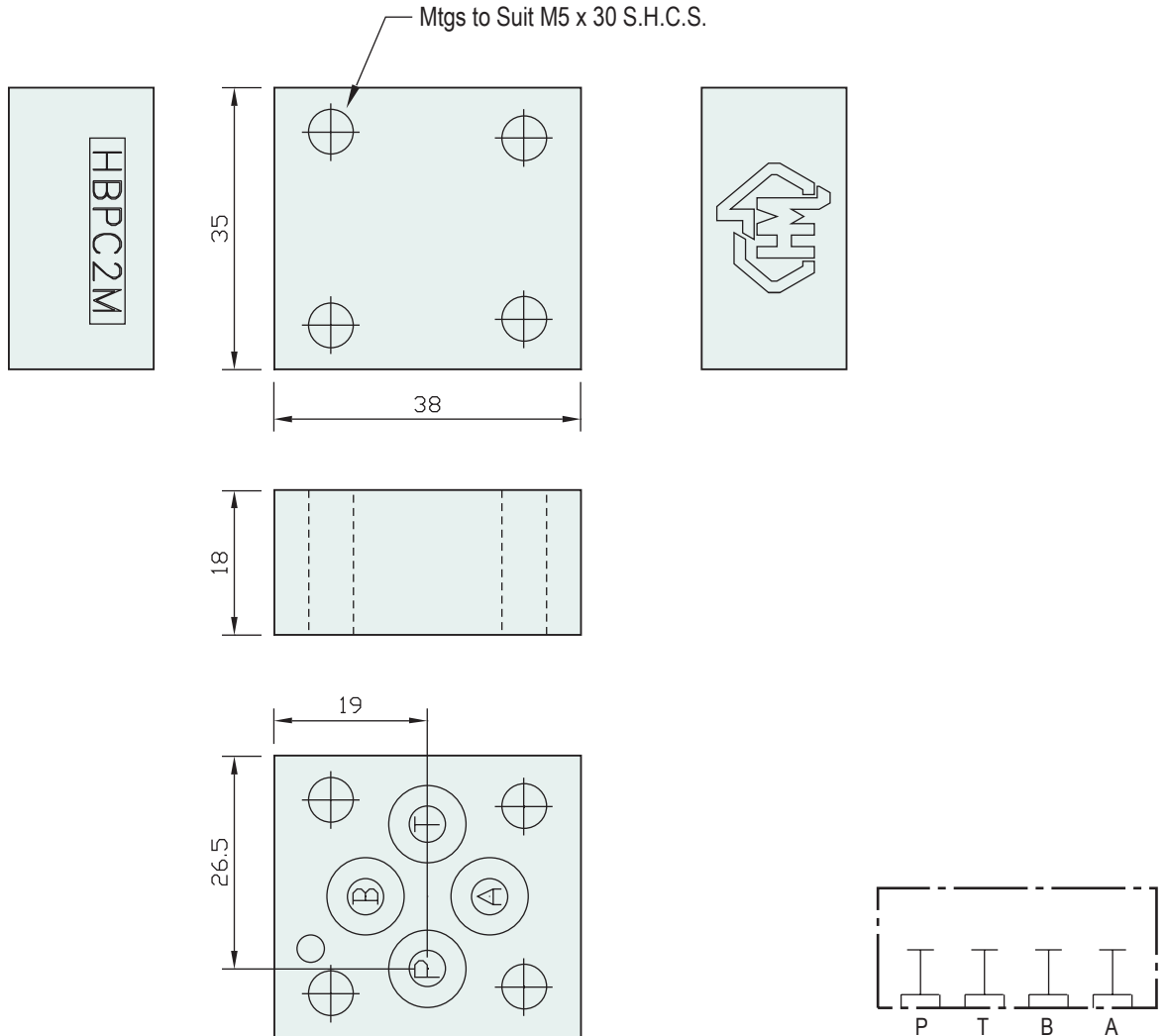
Material :	Alloy - 6061-T6	Steel - S1214
Max. Working Pressure :	Alloy - 210 Bar	Steel - 350 Bar
Surface Treatment :	Alloy - Nil	Steel - Zinc Gold Passivation

Included Components

Socket Head Cap Screws :	4 each M5 x 30
O-Rings	4 each N9-010



Technical Details



Manifold Circuit

Part Number	Nominal Mass Kg
HBPC2M	0.1
HBPC2H	0.2